

Grain: World Markets and Trade

Domestic Demand and Trade Restrictions Reduce India Grain Exports



India's role as a key supplier to the global grains market has diminished over the past 3 years as strong domestic demand and government policies keep domestic supplies within the country. From trade year (TY) 2020/21 to 2023/24, corn exports are estimated to decline 86 percent, rice exports 20 percent, and wheat exports 90 percent. India is exporting half the volume of grains compared to record shipments in 2021/22. Government ethanol policy and growing poultry demand for corn, export restrictions for certain types of rice, and an export ban for wheat have all contributed to the change in India's grain trade environment and will continue to impact the outlook for 2024/25.

The largest shift in India grains trade is for corn. In 2023/24, India is on pace to lose its position as a net exporter for the first time this century. A surge in demand for feed, primarily from India's poultry sector, along with domestic policy incentivizing corn for ethanol production have largely kept supplies in-country and spurred India to begin importing for the first time since 2019/20. Additionally, a 15 percent year over year decline in global corn prices have made Indian exports less competitive and further supported favorably priced corn imports. The [Coarse Grains Market Feature](#) highlights the outlook for India corn trade and its impact on South and Southeast Asia trading partners.

India has been the largest exporter of rice over the past decade. The government's decision to ban exports of some types of rice (albeit with a considerable number of exemptions) and apply export taxes to others has disrupted the global market. When India implemented the ban, rice prices spiked before eventually easing as competitors increased exports. Despite large stocks, the ban on regular white rice exports remains in place, prompting importers to shift to other suppliers such as Vietnam and Thailand. The [Rice Market Feature](#) highlights the impact of trade restrictive measures on India's rice exports overall.

India has had negligible wheat exports since it implemented an export ban on wheat grain in May 2022. The ban was implemented to quell high prices, prioritize domestic consumption after a surge in exports and a smaller crop, and stabilize stocks. With strong consumption, wheat ending stocks in 2023/24 dwindled to the lowest level in over 15 years. With little growth in supplies, flour millers have requested a waiver of the wheat import tariff (40 percent) to enable imports. For more information on the India grain situation, see the [July 2024 India Grain and Feed Update](#).

TABLE OF CONTENTS

World Markets and Trade: Commodities and Data

WHEAT	3
RICE	7
COARSE GRAINS	11
ENDNOTES	15
DATA TABLES.....	18

The Foreign Agricultural Service (FAS) updates its production, supply and distribution (PSD) database for cotton, oilseeds, and grains at 12:00 p.m. on the day the *World Agricultural Supply and Demand Estimates* (WASDE) report is released. This circular is released by 12:15 p.m.

To download the tables in the publication, go to Production, Supply and Distribution Database ([PSD Online](#)): scroll down to Reports, and then click Grains.

FAS Reports and Databases:

[Current World Markets and Trade and World Agricultural Production Reports](#)

[Archived World Markets and Trade and World Agricultural Production Reports](#)

[Production, Supply and Distribution Database \(PSD Online\)](#)

[Global Agricultural Trade System \(U.S. Exports and Imports\)](#)

[Export Sales Report](#)

[Global Agricultural Information Network \(Agricultural Attaché Reports\)](#)

Other USDA Reports:

[World Agricultural Supply and Demand Estimates \(WASDE\)](#)

[Economic Research Service](#)

[National Agricultural Statistics Service](#)

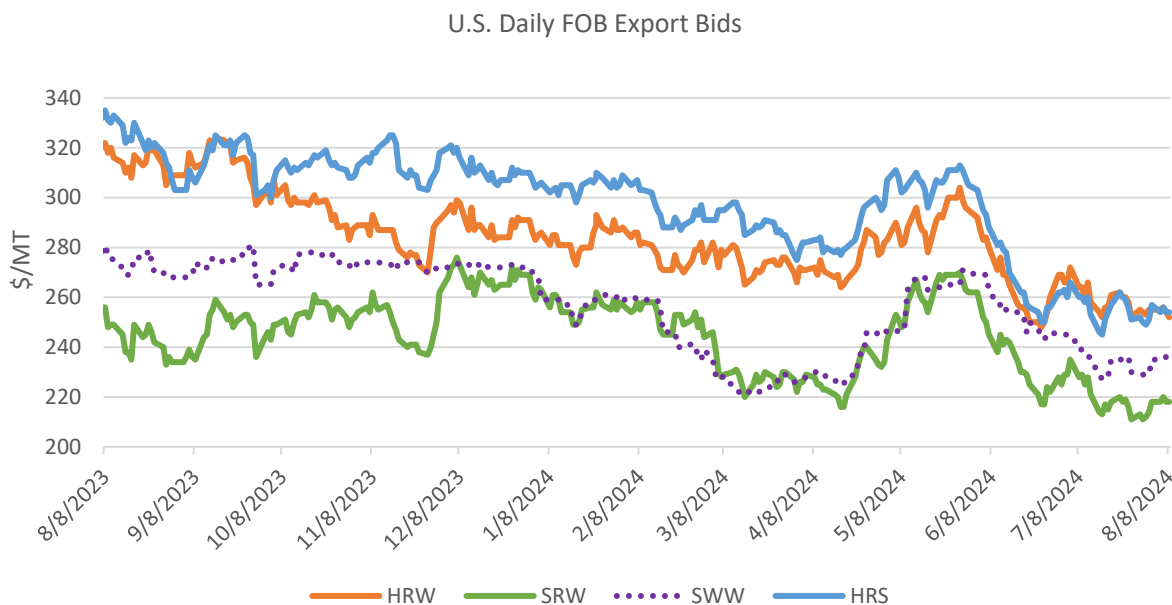
WHEAT

OVERVIEW FOR 2024/25

Record-high global production is forecast higher this month as upward revisions for Ukraine, Kazakhstan, and Australia outweigh a cut to the European Union (EU) and the United States. Global consumption is raised this month to above last year's record on increased feed and residual use by the EU, Kazakhstan, and Ukraine and increased food, seed, and industrial use (FSI) by Nigeria and Algeria. Global trade is adjusted upward due in part to increased imports for the EU, Algeria, and Nigeria and increased exports from Australia and Ukraine. Global stocks are adjusted up slightly from the prior month, though still at the lowest level since 2015/16. The U.S. season-average farm price is unchanged at \$5.70 per bushel.

WHEAT PRICES

Domestic: U.S. quotes for all classes declined since the July WASDE, reflecting ongoing winter wheat harvest pressure and extremely favorable spring wheat production prospects as indicated by the NASS July production forecast. Soft Red Winter (SRW) dropped \$11/ton to \$218 and Hard Red Winter (HRW) dropped \$12/ton to \$252 as the winter wheat harvest reached 88 percent complete. Hard Red Spring (HRS) dipped \$6/ton to \$254 with the Wheat Quality Council crop tour in North Dakota producing record yield results, confirming the NASS July production forecast. Soft White (SWW) fell just \$2/ton to \$236.



Note: Data as of August 9, 2024

Source: International Grains Council

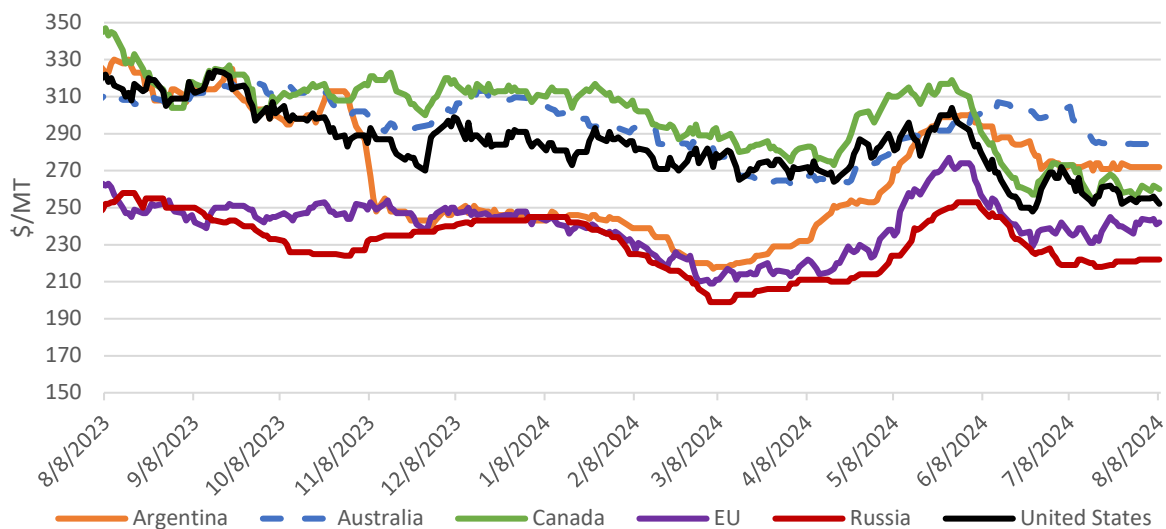
*Note on FOB prices: HRW (Hard Red Winter); SRW (Soft Red Winter); SWW (Soft White Wheat); HRS (Hard Red Spring)

Global: Since the July WASDE, global exporter quotes were mixed as production concerns for many major exporters were balanced by weak international demand. Australian quotes fell \$16/ton with increased competition from both Northern Hemisphere and Black Sea origins and low Chinese demand. Canadian quotes dropped \$13/ton, despite lower spring wheat condition ratings for Alberta and Saskatchewan, with strong competition anticipated from U.S. Hard Red Spring wheat. U.S. quotes dropped \$12/ton with mounting harvest pressure. Argentine quotes dipped just \$1/ton with planting nearly complete. Meanwhile, despite favorable production forecasts from various sources, Russian quotes increased \$3/ton on weak farmer selling. EU quotes rose \$7/ton with ongoing production and quality concerns in France. FranceAgriMer cited the common wheat harvest at 67 percent complete (compared to 86 percent in prior year) and the durum harvest at 88 percent complete (compared to 100 percent in prior year).

Argentina	Australia	Canada	EU	Russia	United States
\$272	\$282	\$260	\$242	\$222	\$252

Note: Data as of August 9, 2024

International Daily FOB Export Bids

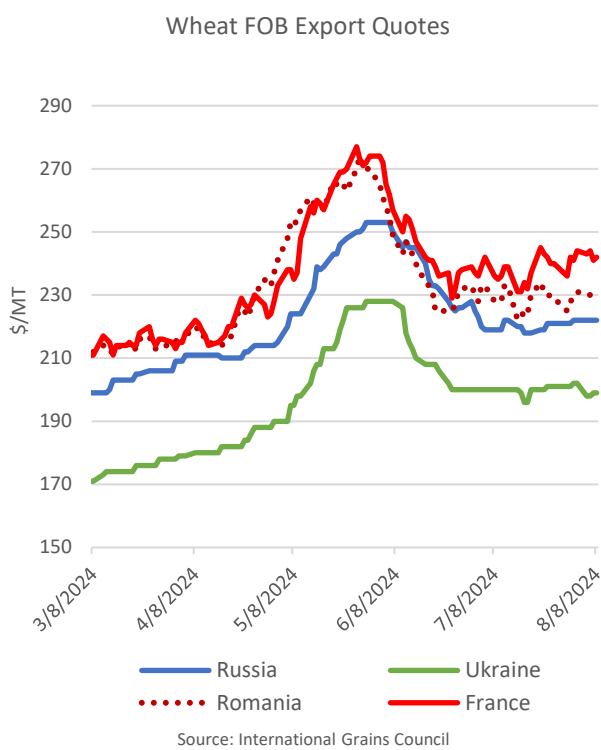
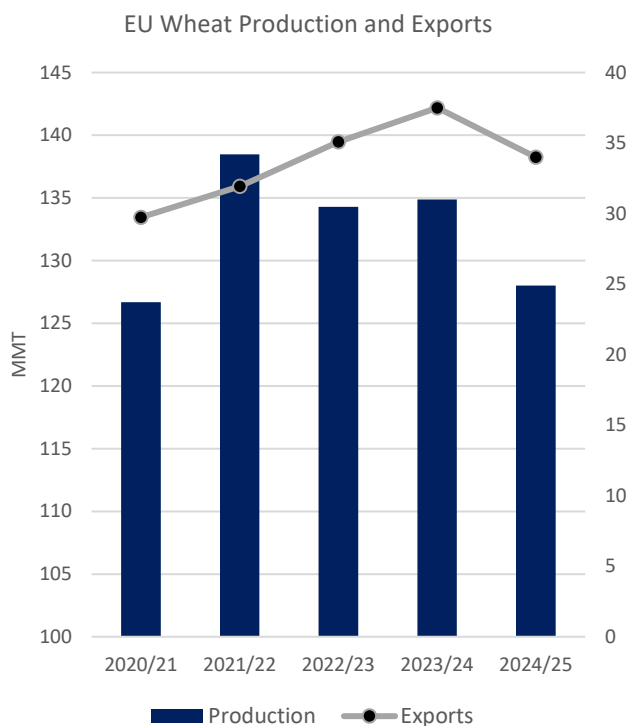


Source: International Grains Council

*Note on FOB prices: Argentina- 12.0%, up river; Australia- average of APW; Kwinana, Newcastle, and Port Adelaide; Russia - Black Sea- milling; EU- France grade 1, Rouen; US- HRW 11.5% Gulf; Canada- CWRS (13.5%), Vancouver

MARKET FEATURE

EU Wheat Exports to Tumble in 2024/25



EU wheat exports in 2024/25 are forecast at the lowest level in 3 years. As the second largest global wheat exporter, key importing markets will need to turn to alternative suppliers. The primary driver is a smaller wheat crop, which is down 5 percent from the prior year on smaller harvested area¹. Notably, in key exporter France, wheat production is anticipated to be down 20 percent from the prior year to the lowest level in almost 4 decades. Exportable supplies are further tightened given the lower carryin stocks in the region.

Prolonged weather-related issues in France have also reduced grain quality, reducing the amount of milling wheat available. With greater availability of feed-quality wheat and a smaller corn crop, the demand for wheat feed use within the EU is expected to remain strong. EU feed and residual use is forecast up 1.5 million tons this month to 46.0 million.

The reduced harvest prospects for EU grains have resulted in higher wheat export quotes from France over the past month, with quotes currently about 10 percent higher relative to key competitor Russia and continuing to rise. The EU, Russia, and Ukraine have traditionally had lower priced exports and shipped to price-conscious importers in the Middle East, Africa, and Asia. Despite smaller crops in Russia and Ukraine, exports from these origins are expected to remain strong as prices are competitive compared to EU quotes. The EU will likely lose market share in some of its top markets, including Morocco, Algeria, Nigeria, and Egypt. Furthermore, with favorable crop prospects in Canada and United States, the EU will face additional competition in top market China.

¹ See the [August 2024 World Agricultural Production report](#).

TRADE CHANGES IN 2024/25 (1,000 MT)

Country	Attribute	Previous	Current	Change	Reason
Algeria	Imports	8,500	9,000	500	Continued growth in FSI consumption
Chile	Imports	1,300	1,100	-200	Lower imports and FSI trends
European Union	Imports	10,000	11,000	1,000	Smaller corn and wheat crops with larger exports from key supplier Ukraine
Iran	Imports	2,500	1,800	-700	Lower expected consumption
Kazakhstan	Imports	2,000	1,000	-1,000	Larger crop and ban on wheat imports via all modes of transport
Nigeria	Imports	4,800	5,200	400	Suspension of import duty
Pakistan	Imports	300	100	-200	Import ban implemented
Thailand	Imports	3,000	3,300	300	Continued growth in FSI consumption
United Kingdom	Imports	3,000	3,200	200	Smaller crop
Australia	Exports	22,000	23,000	1,000	Larger crop
Egypt	Exports	1,300	1,500	200	Strong demand for flour from several African countries
European Union	Exports	34,500	34,000	-500	Smaller crop and less milling wheat supplies
Ukraine	Exports	13,000	14,000	1,000	Larger crop

TRADE CHANGES IN 2023/24 (1,000 MT) – based on trade data

Country	Attribute	Previous	Current	Change
Algeria	Imports	9,000	9,200	200
China	Imports	14,000	13,635	-365
European Union	Imports	12,500	13,000	500
Indonesia	Imports	12,600	13,015	415
Iran	Imports	2,500	2,000	-500
Jordan	Imports	900	1,100	200
Nigeria	Imports	4,800	5,000	200
Thailand	Imports	3,100	3,316	216
Turkey	Imports	9,500	8,922	-578
United Kingdom	Imports	2,800	3,000	200
Uzbekistan	Imports	4,000	3,800	-200
Australia	Exports	23,200	22,515	-685
European Union	Exports	37,000	37,500	500
Kazakhstan	Exports	9,000	8,500	-500
Ukraine	Exports	18,100	18,400	300

RICE

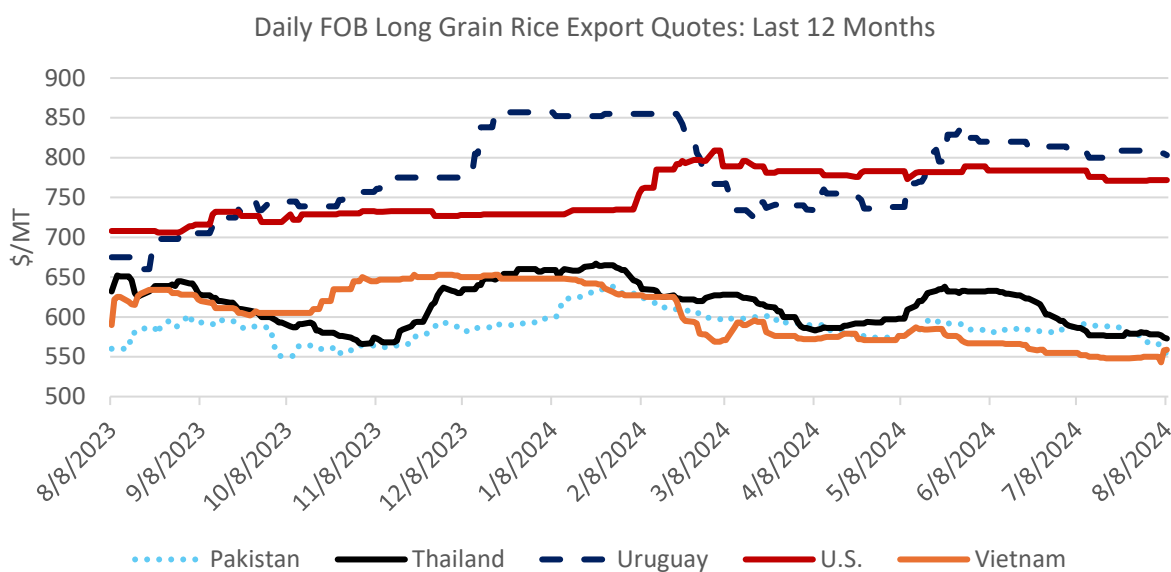
OVERVIEW FOR 2024/25

Global rice production, trade, consumption, and stocks are forecast down this month driven by decreased production for Vietnam. Imports are forecast down led by reductions in the Philippines and Brazil. Export volumes are down mainly for Vietnam and Brazil. Global consumption is forecast down slightly based on reductions in the Philippines, Kenya, and Vietnam. The global stocks forecast is adjusted marginally lower with tighter stocks in Southeast Asia but remains slightly above the prior year.

OVERVIEW FOR 2023/24

Global production is estimated lower this month on reduced production in Burma, Malaysia, Vietnam, and the Philippines more than offsetting an improved Brazil crop. Global trade is slightly up with reductions from Brazil and Cambodia offset with increased shipments from Thailand. Global consumption is adjusted up, mainly in Africa. Ending stocks are down with reduced supplies in Vietnam, the Philippines, and Kenya.

RICE PRICES



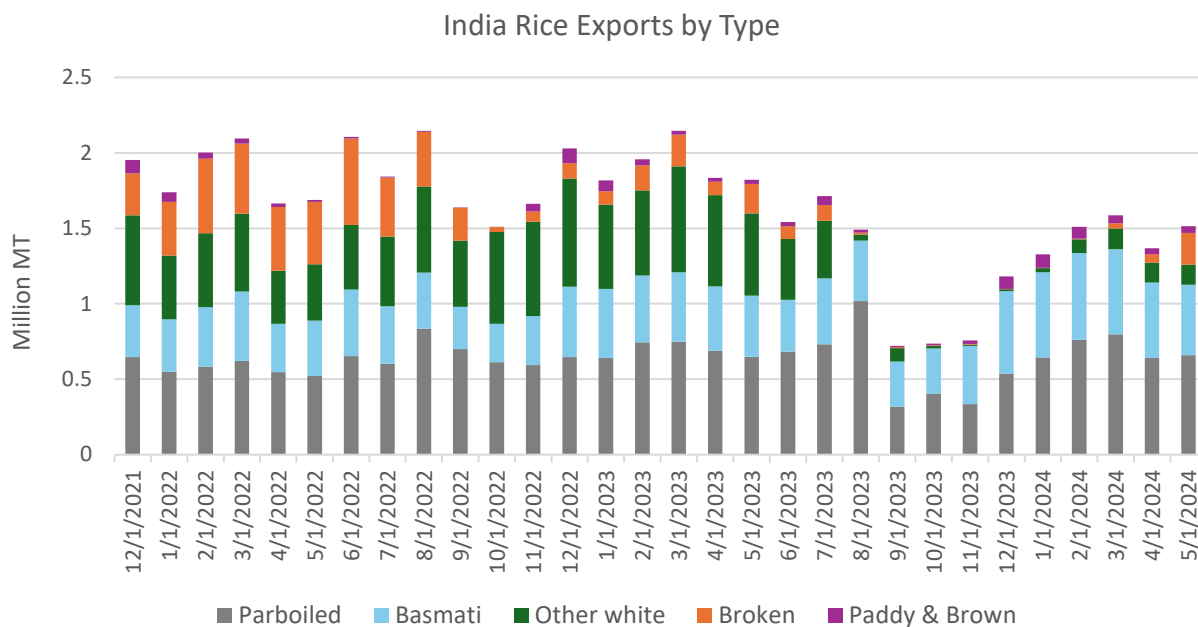
Source: International Grains Council

Note on FOB quotes: Thai 100B, U.S. 4%, all others 5% broken white rice.

Since the July *WASDE*, major Asian exporters have experienced a narrowing of their price quote spread as market volatility has subsided. Over the past month, U.S. prices decreased by \$12 to \$772/ton despite continued demand from Latin America on expectations of a larger U.S crop. Uruguayan quotes decreased \$4 to \$803/ton as purchases by Brazil and the EU declined. With the price quote spread narrowing, Vietnam jumped \$7 to \$559/ton, while Thai increased slightly by \$2 to \$573/ton with only limited demand from Indonesia and the Philippines. Pakistani quotes fell \$33 to \$555/ton due to slowing demand from importers.

MARKET FEATURE

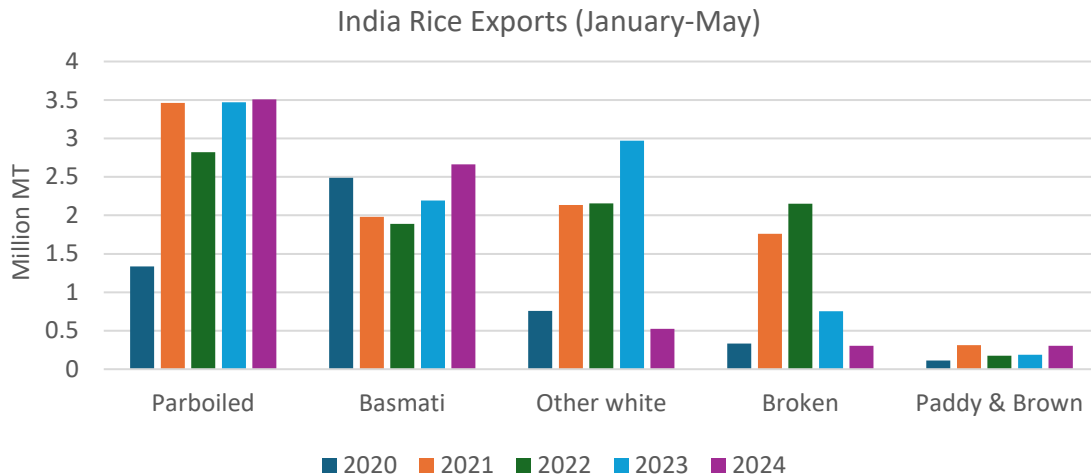
India White and Broken Rice Exports Tumble while Basmati Makes Gains



India, the largest rice exporter, has placed numerous restrictions on rice exports, including bans on both broken rice (September 2022) and other (non-basmati non-parboiled) white rice (July 2023). These restrictions have reduced India’s exports, which are down nearly 25 percent in the first half of the year from the same time last year. The reduction in the banned types of rice is only partially offset by more basmati and parboiled rice exports.

Broken rice has typically been a minor portion of India’s overall rice exports. However, exports spiked in 2021 and 2022 with stronger demand from Asia. Senegal is traditionally India’s largest market for broken rice, but China and Vietnam began buying large quantities as broken rice was used as a partial substitute for feed when other grains experienced inflated prices. Shortly after the ban on broken rice, exports dropped sharply as trade with China and Vietnam came to a halt. So far in 2024 (January-May), India has only exported 300,000 tons of broken rice, to Senegal and Indonesia. Vietnam has partly compensated by buying more brown rice from India, which is not banned.

Similar to broken rice, exports for other white rice experienced a large increase in demand between 2021 and 2023 on competitive prices. Non-basmati non-parboiled rice exports exceeded 6.0 million tons in 2023, accounting for 35 percent of India’s total rice exports. In July 2023, India banned exports of white rice after concerns of insufficient domestic availability. Core markets within Africa are still impacted, while some have been allowed to continue buying via government-to-government agreements. Countries like Benin, Mozambique, and Madagascar, where India was the sole supplier, have turned to buying from Pakistan and Thailand.



In contrast to the decline in export volume for broken and non-parboiled/non-basmati white rice, India has seen growth in basmati exports. Basmati rice is a premium fragrant rice and is not a substitute for the other rice types. Basmati rice exports are not banned but are listed with a minimum export price. In line with rising population, demand for basmati has jumped in core markets Saudi Arabia, Iraq, and Yemen.

Parboiled rice, India’s largest class of rice export, has only been taxed and not banned, with exports continuing to core markets like Nigeria. Parboiled exports nearly doubled in 2021 and have averaged more than 7.6 million tons annually between 2021 and 2023. In 2021, Bangladesh imported more than 2.2 million tons of India parboiled rice to battle high domestic prices. With a larger crop, Bangladesh imports have declined, but growing sales to Africa have nearly offset the loss. Some countries affected by the India export bans, like Mozambique, have shifted to buying India parboiled rice.

TRADE CHANGES IN 2025 (1,000 MT)

Country	Attribute	Previous	Current	Change	Reason
Brazil	Imports	1,050	950	-100	Larger carry-over stocks
Philippines	Imports	4,700	4,600	-100	Consumption and ending stocks steady, local production up despite reduced import duties
Brazil	Exports	1,300	1,200	-100	Continued competition in Western Hemisphere
Vietnam	Exports	7,500	7,400	-100	Smaller crop

TRADE CHANGES IN 2024 (1,000 MT)

Country	Attribute	Previous	Current	Change	Reason
Brazil	Imports	1,300	1,100	-200	Larger crop
China	Imports	1,700	1,600	-100	Small purchases of India and Pakistan Rice
Kenya	Imports	1,150	1,000	-150	Lower than expected purchases to date despite reduced customs duties
Malaysia	Imports	1,500	1,600	100	Increased purchases due to a smaller crop
Mozambique	Imports	750	850	100	Increased purchases from all origins and of Indian parboiled rice
Philippines	Imports	4,700	4,600	-100	Slowing purchases of Vietnam rice
Vietnam	Imports	2,750	2,600	-150	Reduced buying of Cambodia rice
Brazil	Exports	1,300	1,100	-200	Uncompetitive prices
Cambodia	Exports	2,700	2,600	-100	Weak demand from Vietnam
Thailand	Exports	8,500	8,800	300	Increased sales to core markets in Africa and Middle East

COARSE GRAINS

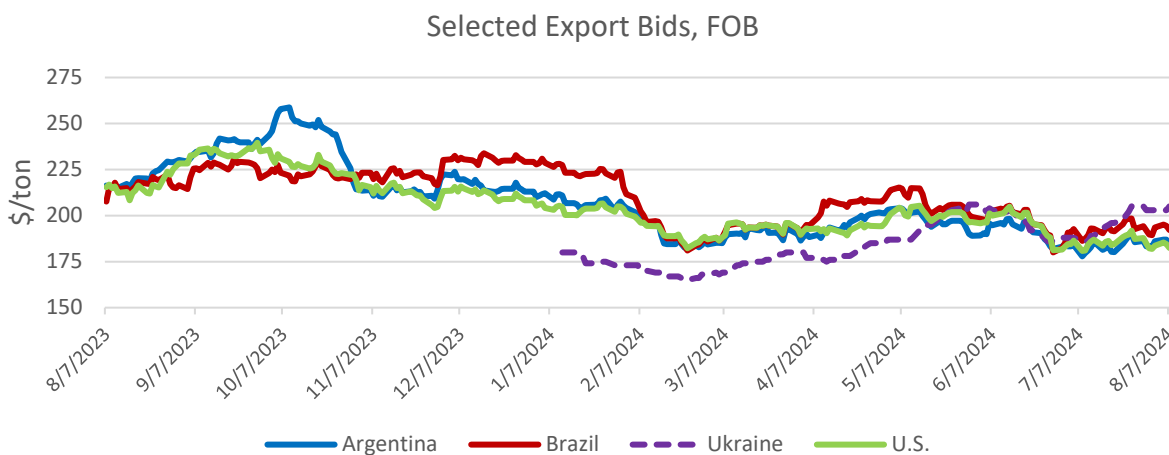
OVERVIEW FOR 2024/25

Global corn production is forecast down this month with reductions for the European Union, Russia, Serbia, Ukraine, and Moldova more than offsetting an increase for the United States. Global trade is forecast down as lower exports for Ukraine, Serbia, Russia, South Africa, the European Union, and Paraguay more than offset an increase for the United States. Global imports are forecast down as reduced forecasts for Iran, Vietnam, Chile, Egypt, and Nepal more than offset a raise to India. The U.S. season-average farm price is down 10 cents to \$4.20 per bushel.

OVERVIEW FOR 2023/24

Global corn production is forecast down this month as reductions for Argentina and Paraguay more than offset an increase for Ukraine. Global trade is forecast up as higher exports for the United States, Ukraine, and Pakistan more than offset cuts to Argentina and Paraguay. Global imports are forecast down as reduced forecasts for the European Union, South Korea, and Canada more than offset a boost to India. The U.S. season-average farm price is unchanged at \$4.65 per bushel.

CORN PRICES



Export bids (fob, US\$ per ton)	7-Aug-24	9-Jul-24	7-Aug-23	% change, '23 - '24
Argentina, Up River	184	180	216	-15%
Brazil, Paranaguá	192	187	208	-7%
Ukraine	205	186	N/A	N/A
U.S. #3 Yellow Corn, Gulf	182	181	215	-15%

Since the July WASDE, export bids for all major exporters have increased. U.S. bids experienced the least change, up just \$1/ton to \$182, and are currently the most price competitive on expectations of plentiful supplies. For the week ending August 4, NASS estimates 67 percent of the corn crop to be in good-to-excellent condition, compared to 68 percent a week prior and 57 percent a year ago. Ukrainian bids were up \$19/ton to \$205. Hot, dry weather in Ukraine may be influencing supply expectations for the upcoming crop. Brazilian bids were up \$5/ton to \$192 and Argentine bids were up \$4/ton to \$184. Farmer sales and exports have been sluggish in both countries.

MARKET FEATURE

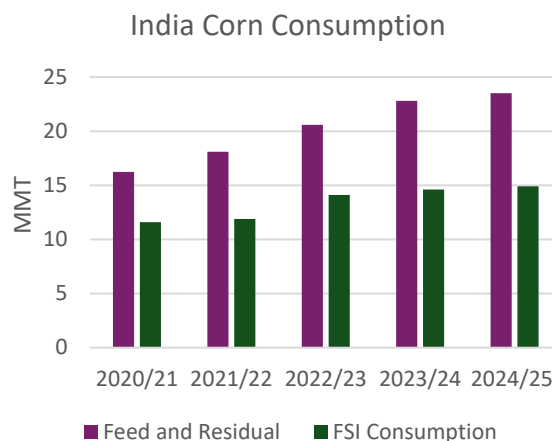
Strong Domestic Corn Demand in India Curtails Exports as Imports Surge



A surge in domestic demand for corn in India has sharply curtailed exports and led to record imports for TY 2023/24 (Oct-Sep). Driving factors for this rise in demand include government ethanol policy and a growing poultry market. Historically, India has been a net exporter that supplies significant volumes of corn to South and Southeast Asia. For the first time since 1999/00, India will import as much corn as it exports.

India recently revised its 2018 National Policy on Biofuels to include corn as a feedstock, offering price incentives for corn-based ethanol². Sugar, India's primary feedstock for ethanol, has faced government restrictions in usage for ethanol following multiple years of low production, further incentivizing corn feedstock. Ethanol manufacturers' shift to corn as an alternative coincides with a 10 percent increase in feed demand from India's growing poultry sector. For the first time since 2019/20, India has imported foreign corn from Ukraine and Burma, where non-GE corn cultivation meet India's GE import restrictions. Additionally, in June, India announced corn imports of 500,000 tons under a Tariff Rate Quota (TRQ) at a 15 percent duty to satisfy this sharp rise in demand³.

High global supplies have facilitated a drop in international corn prices in 2023/24. This has dampened India corn exports as strong domestic prices have incentivized traders to keep supplies in-country. India has been a key exporter to Vietnam, Nepal, and Bangladesh, exporting 2.8 million tons of corn in 2022/23, nearly a quarter of the countries' combined total corn imports. However, exports from India to these countries declined 86 percent in the first 8 months of 2023/24 year over year. In response to this drop-off, countries shifted to other exporters or relied further on domestic supplies.



² [India 2024 Biofuels Annual](#)

³ [India July Grain and Feed Update](#)

Domestic demand is expected to remain strong for 2024/25 amid ongoing demand from the ethanol and feed sectors. India will attempt to meet its Ethanol Blending with Petrol Program (EBP) targets rates and has not yet indicated when restrictions for sugar in ethanol will be lifted. Exports are projected 200,000 tons lower than 2023/24, representing a longer-term shift in the India's trade environment as these factors continue to persist.

TRADE CHANGES IN 2024/25 (1,000 MT)

Country	Commodity	Attribute	Previous	Current	Change	Reason
Chile	Corn	Imports	2,400	2,200	-200	Lower Paraguay exports
China	Sorghum	Imports	7,600	6,300	-1,300	Lower U.S. production
Egypt	Corn	Imports	8,000	7,800	-200	Lower Ukraine exports
European Union	Barley	Exports	7,000	6,600	-400	Smaller crops
	Corn	Exports	4,000	3,500	-500	
India	Corn	Exports	600	300	-300	Higher domestic consumption
	Corn	Imports	0	300	300	Higher domestic consumption
Iran	Corn	Imports	8,600	8,200	-400	Lower Russia exports
Kazakhstan	Barley	Exports	1,300	1,500	200	Larger crop
		Imports	500	300	-200	
Nepal	Corn	Imports	500	300	-200	Lower India exports
Paraguay	Corn	Exports	3,200	2,700	-500	Smaller crop
Russia	Corn	Exports	4,600	4,200	-400	Smaller crop
Serbia	Corn	Exports	2,100	1,600	-500	Smaller crop
South Africa	Corn	Exports	3,400	3,000	-400	Higher domestic consumption
Ukraine	Barley	Exports	2,200	2,400	200	Larger crop
	Corn	Exports	24,500	24,000	-500	Smaller crop
United States	Corn	Exports	56,000	58,000	2,000	Expectations of competitiveness against other exporters
	Sorghum	Exports	5,900	4,600	-1,300	Smaller crop
Vietnam	Corn	Imports	12,000	11,700	-300	Lower South Africa, Russia exports

TRADE CHANGES IN 2023/24 (1,000 MT) - based on trade data

Country	Commodity	Attribute	Previous	Current	Change
Argentina	Barley	Exports	3,300	3,100	-200
	Corn	Exports	35,000	33,000	-2,000
Australia	Barley	Exports	7,200	7,400	200
Canada	Corn	Imports	3,200	3,000	-200
European Union	Corn	Imports	20,500	19,500	-1,000
India	Corn	Imports	200	500	300
Indonesia	Corn	Imports	1,400	1,600	200
Korea, South	Corn	Imports	11,600	11,300	-300
Mexico	Corn	Imports	22,000	22,500	500
Pakistan	Corn	Exports	500	900	400
Paraguay	Corn	Exports	3,400	3,100	-300
Russia	Corn	Exports	6,000	6,200	200
Ukraine	Corn	Exports	28,000	29,500	1,500
United States	Corn	Exports	55,500	57,000	1,500
	Sorghum	Exports	6,200	6,000	-200
Zimbabwe	Corn	Imports	800	1,100	300

ENDNOTES

REGIONAL TABLES

North America: Canada, Mexico, the United States

Central America: Belize, Costa Rica, El Salvador, Guatemala, Honduras, Nicaragua, Panama

Caribbean: Cuba, Dominican Republic, Haiti, Jamaica, Trinidad and Tobago

South America: Argentina, Bolivia, Brazil, Chile, Colombia, Ecuador, Guyana, Paraguay, Peru, Suriname, Uruguay, Venezuela

EU: Austria, Belgium/Luxembourg, Bulgaria, Croatia, Cyprus, Czech Republic, Denmark, Estonia, Finland, France, Germany, Greece, Hungary, Ireland, Italy, Latvia, Lithuania, Malta, Netherlands, Poland, Portugal, Romania, Slovakia, Slovenia, Spain, and Sweden. Effective January 1, 2021, the separation of the United Kingdom (UK) from the European Union (EU) was complete, including trade between both entities. Starting in May 2021 with the release of 2021/22 data, grain PSDs reflect EU27 (shown in the PSD system as “European Union”) and UK separately. Beginning with the release of 2021/22 data, historical data for both EU27 and the UK are provided for 5 years (2016/17 through 2020/21). See below for notes on prior years’ EU Consolidated data.

Other Europe: Albania, Bosnia and Herzegovina, Former Yugoslavia, Gibraltar, Iceland, North Macedonia, Montenegro, Norway, Serbia, Switzerland, United Kingdom

Former Soviet Union: Armenia, Azerbaijan, Belarus, Georgia, Kazakhstan, Kyrgyzstan, Moldova, Russia, Tajikistan, Turkmenistan, Ukraine, Uzbekistan

Middle East: Bahrain, Iran, Iraq, Israel, Jordan, Kuwait, Lebanon, Oman, Qatar, Saudi Arabia, Syria, Turkey, United Arab Emirates, Yemen

North Africa: Algeria, Egypt, Libya, Morocco, Tunisia

Sub-Saharan Africa: all African countries except North Africa

East Asia: China, Hong Kong, Japan, South Korea, North Korea, Macau, Mongolia, Taiwan

South Asia: Afghanistan, Bangladesh, Bhutan, India, Nepal, Pakistan, Sri Lanka

Southeast Asia: Brunei, Burma, Cambodia, Indonesia, Laos, Malaysia, Philippines, Singapore, Thailand, Vietnam

Oceania: Australia, Fiji, New Zealand, Papua New Guinea

OTHER NOTES

Marketing Years (MY): MY refers to the 12-month period at the onset of the main harvest, when the crop is marketed (i.e., consumed, traded, or stored). The year first listed begins a country's MY for that commodity (2022/23 starts in 2022); except for summer grains in certain Southern Hemisphere countries and for rice in selected countries, where the second year begins the MY (2022/23 starts in 2023). Key exporter MY's are:

Wheat	Corn	Barley	Sorghum
Argentina (Dec/Nov)	Argentina (Mar/Feb)	Australia (Nov/Oct)	Argentina (Mar/Feb)
Australia (Oct/Sep)	Brazil (Mar/Feb)	Canada (Aug/Jul)	Australia (Mar/Feb)
Canada (Aug/Jul)	Russia (Oct/Sep)	European Union (Jul/Jun)	United States (Sep/Aug)
China (Jul/Jun)	South Africa (May/Apr)	Kazakhstan (Jul/Jun)	
European Union (Jul/Jun)	Ukraine (Oct/Sep)	Russia (Jul/Jun)	
India (Apr/Mar)	United States (Sep/Aug)	Ukraine (Jul/Jun)	
Kazakhstan (Sep/Aug)		United States (Jun/May)	
Russia (Jul/Jun)			
Turkey (Jun/May)			
Ukraine (Jul/Jun)			
United States (Jun/May)			

For a complete list of local marketing years, please see the FAS website (<https://apps.fas.usda.gov/psdonline/>): go to Reports, Reference Data, and then Data Availability.

Prices: Many export bids and quotes in this publication are Free-On Board (FOB). FOB is a term of sale meaning that the shipper will pay all costs to deliver and load the cargo at a specified place, usually a ship, and then the receiver pays the costs from there on — normally the ocean freight and all subsequent costs of unloading and delivery. All references to ton, unless otherwise specified, refer to metric tons – 2204.62 U.S. pounds/1,000 kilograms.

Stocks: Unless otherwise stated, stock data are based on an aggregate of differing local marketing years and should not be construed as representing world stock levels at a fixed point in time.

Consumption: World totals for consumption reflect total utilization, including food, seed, industrial, feed, and waste; as well as differences in local marketing year imports and local marketing year exports. Consumption statistics for regions and individual countries, however, reflect food, seed, industrial, feed, and waste only.

Trade: All PSD tables are balanced on the different local marketing years. All trade tables contain Trade Year (TY) data which puts all countries on a uniform, 12-month period for analytical comparisons: wheat is July/June; coarse grains, corn, barley, sorghum, oats, and rye are Oct/Sept; and rice is calendar year (TY 2022/23 corresponds to Jan – Dec 2023).

EU Consolidation:

Effective January 1, 2021, the separation of the United Kingdom (UK) from the European Union (EU) was complete, including trade between both entities. Starting in May 2021 with the release of 2021/22 data, field crops PSDs reflect EU27 (shown in the PSD system as “European Union”) and UK separately.

Beginning with the release of 2021/22 data, historical data for both EU27 and the UK are provided for 5 years (2016/17 through 2020/21). The trade figures starting from 1999/00 through 2015/16 represents the European Union (EU27 plus UK) and excludes all intra-trade. For the years 1960/61 through 1998/99, figures are the EU-15 and also exclude all intra-trade. EU-15 member states' data for grains are no longer maintained in the official USDA database. Data for the individual NMS-10, plus Bulgaria, Romania, and Croatia, exists only prior to 1999/00.

Statistics: (1) Wheat trade statistics include wheat (1001), flour (1101), bulgur (190430), and selected pasta products (190219, 190230, and 190240) on a grain-equivalent basis (all wheat flour and products are multiplied by 1.368). (2) Rice trade statistics include rough (100610), brown (100620), milled (100630), and broken (100640) on a milled-equivalent basis (rough rice is multiplied by 0.7 and brown rice is multiplied by 0.875). (3) Coarse grains statistics include corn, barley, sorghum, oats, rye, millet, and mixed grains but exclude trade in barley malt, millet, and mixed grains.

Unaccounted: This term includes grain in transit, reporting discrepancies in some countries, and trade to countries outside the USDA database.

The Global Commodity Analysis Division, Global Market Analysis, Foreign Agricultural Service, USDA, Washington, DC 20250, prepared this publication. Information is gathered from official statistics of foreign governments and other foreign source materials, reports of U.S. agricultural attachés and Foreign Service officers, office research, and related information. Further information may be obtained by writing the Division or calling (202) 720-3448.

Note: For further details on world grain production, please see World Agricultural Production 2024. This publication is available in its entirety on the Internet via the Foreign Agricultural Service Home Page. The address is: <http://www.fas.usda.gov>

Hannah Austin	(202) 456-7890	Hannah.Austin@usda.gov	Wheat
Amy Gaito	(202) 772-4890	Amy@Gaito@usda.gov	Wheat
Rachel Trego	(202) 720-1073	Rachel.Trego@usda.gov	Wheat/Rice
Adolfo Escoto	(202) 235-7550	Adolfo.Escoto@usda.gov	Rice
Samuel Driggers	(202) 720-1073	Samuel.Driggers@usda.gov	Rice
Eric Gero	(202) 869-9092	Eric.Gero@usda.gov	Coarse Grains
Nigel Hunter	(202) 720-8096	Nigel.Hunter@usda.gov	Coarse Grains
Kevin Min	(202) 720-0626	Kevin.Min1@usda.gov	Coarse Grains

DATA TABLES

Page Intentionally Left Blank

All Grain Summary Comparison
Million Metric Tons

Marketing Year	Wheat			Rice, Milled			Corn			
	2022/23	2023/24	2024/25	2022/23	2023/24	2024/25	2022/23	2023/24	2024/25	
Production										
United States	(Jun-May)	44.9	49.3	53.9	5.1	6.9	7.0	346.7	389.7	384.7
Other		744.1	740.4	744.4	510.9	513.5	520.7	813.0	834.1	835.1
World Total		789.0	789.7	798.3	516.0	520.4	527.7	1,159.7	1,223.8	1,219.8
Domestic Consumption										
United States	(Jun-May)	30.3	30.2	30.9	4.6	5.0	5.1	305.9	320.4	321.7
Other		751.5	768.1	766.7	517.3	515.0	518.3	857.9	885.4	890.9
World Total		781.8	798.3	797.6	521.9	520.0	523.4	1,163.8	1,205.8	1,212.6
Ending Stocks										
United States	(Jun-May)	15.5	19.1	22.5	1.0	1.2	1.4	34.6	47.4	52.7
Other		255.9	243.3	234.1	178.7	175.5	176.0	268.2	261.1	257.5
World Total		271.4	262.4	256.6	179.7	176.7	177.4	302.8	308.5	310.2
TY Imports										
United States	(Jun-May)	3.3	3.8	3.0	1.4	1.4	1.5	1.0	0.7	0.7
Other		208.8	215.5	205.6	49.9	51.2	50.0	172.3	188.6	185.7
World Total		212.1	219.3	208.6	51.3	52.6	51.5	173.3	189.3	186.4
TY Exports										
United States	(Jun-May)	20.3	19.6	22.5	2.4	3.2	3.2	42.8	57.0	58.0
Other		197.4	204.1	192.4	50.9	52.0	50.9	138.0	142.3	135.1
World Total		217.7	223.7	214.9	53.3	55.2	54.1	180.8	199.3	193.1

Note: Consumption in this table has not been adjusted for differences in marketing year imports and exports and therefore differs from global totals shown elsewhere. Marketing years for U.S. grains are: Wheat (Jun-May), Rice (Aug-Jul), Corn (Sep-Aug). 'Marketing Year' column is germane for U.S. wheat only.

World Wheat, Flour, and Products Trade
July/June Year, Thousand Metric Tons

	2020/21	2021/22	2022/23	2023/24	2024/25 Jul	2024/25 Aug
TY Exports						
Russia	39,100	33,000	49,000	55,500	48,000	48,000
European Union	29,736	31,927	35,079	37,500	34,500	34,000
Canada	27,722	15,010	25,334	25,664	25,000	25,000
Australia	19,720	25,958	32,329	22,515	22,000	23,000
Ukraine	16,851	18,844	17,122	18,400	13,000	14,000
Argentina	9,597	17,651	4,681	7,282	11,500	11,500
Kazakhstan	8,128	8,455	9,862	8,500	10,500	10,500
Turkey	6,571	6,646	6,953	9,991	8,500	8,500
Brazil	911	3,105	2,689	2,812	3,000	3,000
Uzbekistan	974	1,394	1,119	1,700	1,800	1,800
Others	13,672	21,848	13,234	14,242	12,587	13,052
Subtotal	172,982	183,838	197,402	204,106	190,387	192,352
United States	26,636	21,347	20,279	19,594	22,500	22,500
World Total	199,618	205,185	217,681	223,700	212,887	214,852
TY Imports						
China	10,618	9,568	13,282	13,635	12,000	12,000
Egypt	12,149	11,256	11,221	12,000	12,000	12,000
Indonesia	9,995	11,271	9,446	13,015	12,000	12,000
European Union	5,390	4,631	12,193	13,000	10,000	11,000
Algeria	7,680	8,500	8,700	9,200	8,500	9,000
Turkey	8,051	9,555	12,500	8,922	8,000	8,000
Morocco	5,191	4,726	5,770	6,000	7,500	7,500
Bangladesh	7,200	6,340	5,120	6,500	6,500	6,500
Philippines	6,105	6,886	5,743	6,500	6,000	6,000
Brazil	6,359	6,582	4,985	5,921	5,600	5,600
Mexico	4,724	5,326	5,232	5,288	5,600	5,600
Japan	5,493	5,605	5,452	5,346	5,300	5,300
Nigeria	6,586	6,187	4,732	5,000	4,800	5,200
Afghanistan	3,700	4,000	4,350	4,400	4,500	4,500
Vietnam	3,900	4,517	4,317	5,000	4,500	4,500
Korea, South	3,889	5,099	4,533	4,990	4,400	4,400
Uzbekistan	3,546	3,318	4,269	3,800	4,300	4,300
Yemen	4,058	3,442	4,157	4,000	3,900	3,900
Saudi Arabia	2,773	3,052	5,260	4,100	3,600	3,600
Thailand	3,306	2,351	3,163	3,316	3,000	3,300
United Kingdom	3,033	2,635	2,016	3,000	3,000	3,200
Kenya	2,092	2,042	2,300	2,600	2,600	2,600
Iraq	2,175	2,576	3,986	2,750	2,400	2,400
Sudan	2,064	2,381	2,276	2,300	2,400	2,400
Colombia	1,906	2,057	2,036	1,950	2,000	2,100
Others	59,937	65,291	61,766	63,033	59,545	58,740
Subtotal	191,920	199,194	208,805	215,566	203,945	205,640
Unaccounted	5,012	3,260	5,607	4,355	5,942	6,212
United States	2,686	2,731	3,269	3,779	3,000	3,000
World Total	199,618	205,185	217,681	223,700	212,887	214,852

TY=Trade Year, see Endnotes.

World Wheat Production, Consumption, and Stocks
Local Marketing Years, Thousand Metric Tons

	2020/21	2021/22	2022/23	2023/24	2024/25 Jul	2024/25 Aug
Production						
China	134,250	136,946	137,723	136,590	140,000	140,000
European Union	126,684	138,479	134,293	134,865	130,000	128,000
India	107,860	109,586	104,000	110,554	114,000	114,000
Russia	85,352	75,158	92,000	91,500	83,000	83,000
Canada	35,437	22,422	34,335	31,954	35,000	35,000
Pakistan	25,248	27,464	26,209	28,161	31,400	31,400
Australia	31,923	36,237	40,545	26,000	29,000	30,000
Ukraine	25,420	33,007	21,500	23,000	19,500	21,600
Turkey	18,250	16,000	17,250	21,000	19,000	19,000
Argentina	17,640	22,150	12,550	15,850	18,000	18,000
Kazakhstan	14,256	11,814	16,404	12,111	14,500	16,000
Iran	15,000	12,000	13,200	14,000	14,500	14,500
United Kingdom	9,658	13,988	15,540	13,980	10,850	10,850
Brazil	6,235	7,679	10,554	8,100	9,500	9,500
Egypt	9,102	9,842	9,500	8,870	9,200	9,200
Others	60,867	62,828	58,513	63,820	64,078	64,298
Subtotal	723,182	735,600	744,116	740,355	741,528	744,348
United States	49,523	44,804	44,898	49,314	54,659	53,930
World Total	772,705	780,404	789,014	789,669	796,187	798,278
Total Consumption						
China	155,000	148,000	148,000	153,500	151,000	151,000
India	102,217	109,882	108,676	112,356	113,000	113,000
European Union	104,750	108,250	109,000	111,000	109,250	110,250
Russia	42,500	41,750	41,000	40,500	38,750	38,750
Pakistan	26,300	27,700	29,000	30,200	31,200	31,200
Turkey	20,600	20,100	20,200	19,800	20,200	20,200
Egypt	20,500	20,500	20,550	20,500	20,300	20,100
Iran	17,400	18,200	18,100	17,300	17,300	17,100
United Kingdom	13,240	15,324	15,000	15,300	14,000	14,000
Algeria	11,150	11,370	11,570	11,750	11,650	11,950
Brazil	11,800	11,750	11,850	12,000	11,900	11,900
Indonesia	10,100	10,500	9,800	11,300	11,400	11,600
Morocco	10,300	10,500	10,000	10,000	10,100	10,100
Afghanistan	8,200	8,250	8,500	9,100	9,600	9,600
Canada	9,100	10,148	9,447	9,200	9,300	9,300
Others	183,826	186,161	180,801	184,289	183,941	186,591
Subtotal	755,936	760,939	760,256	768,525	769,078	773,098
United States	30,185	30,411	30,331	30,227	30,862	30,917
World Total	786,121	791,350	790,587	798,752	799,940	804,015
Ending Stocks						
China	139,120	136,759	138,818	134,503	134,508	134,503
European Union	10,698	13,631	16,038	15,403	10,938	10,153
India	27,800	19,500	9,500	7,500	8,500	8,500
Russia	11,380	12,088	14,388	10,188	6,738	6,738
Algeria	4,724	4,351	5,081	5,226	5,171	5,271
Pakistan	3,056	4,530	3,919	4,967	4,667	4,467
Saudi Arabia	2,429	2,002	3,504	4,204	4,304	4,354
Others	61,753	61,799	64,693	61,261	59,102	60,111
Subtotal	260,960	254,660	255,941	243,252	233,928	234,097
United States	23,001	18,355	15,501	19,107	23,309	22,525
World Total	283,961	273,015	271,442	262,359	257,237	256,622

Regional Wheat Imports, Production, Consumption, and Stocks

Thousand Metric Tons

	2020/21	2021/22	2022/23	2023/24	Jul 2024/25	Aug 2024/25
TY Imports						
North America	7,959	8,615	9,046	9,624	9,150	9,150
Central America	2,171	2,130	2,044	2,188	2,290	2,290
South America	15,292	14,789	13,035	14,202	13,990	13,940
European Union	5,390	4,631	12,193	13,000	10,000	11,000
Other Europe	4,611	4,413	3,630	4,743	4,710	4,925
Former Soviet Union - 12	8,925	10,577	13,472	10,870	11,330	10,180
Middle East	27,125	35,009	38,224	30,132	28,870	28,170
North Africa	28,246	27,477	29,209	30,750	31,400	31,900
Sub-Saharan Africa	26,731	26,831	24,233	27,912	26,900	28,475
East Asia	22,206	22,166	25,079	26,024	23,820	23,840
South Asia	16,437	13,945	13,388	15,763	12,925	12,725
Southeast Asia	26,042	27,957	25,196	30,503	28,215	28,565
Others	3,471	3,385	3,325	3,634	3,345	3,480
Total	194,606	201,925	212,074	219,345	206,945	208,640
Production						
North America	87,947	70,510	82,844	84,744	92,459	91,730
South America	27,627	33,424	27,055	28,188	31,690	31,690
European Union	126,684	138,479	134,293	134,865	130,000	128,000
Other Europe	14,185	18,856	20,450	19,044	15,490	15,490
Former Soviet Union - 12	139,464	133,980	143,924	140,983	131,970	135,790
Middle East	41,572	34,457	36,234	44,170	43,892	43,892
North Africa	16,014	21,277	17,238	16,371	16,050	16,050
Sub-Saharan Africa	9,409	9,646	9,403	9,462	9,597	9,597
East Asia	135,744	138,736	139,288	138,296	141,734	141,734
South Asia	141,601	144,299	137,257	147,075	153,790	153,790
Oceania	32,377	36,660	40,948	26,391	29,435	30,435
Others	81	80	80	80	80	80
Total	772,705	780,404	789,014	789,669	796,187	798,278
Domestic Consumption						
North America	46,435	47,984	47,578	47,327	47,962	48,017
South America	29,578	29,482	29,695	30,175	30,115	30,005
European Union	104,750	108,250	109,000	111,000	109,250	110,250
Other Europe	18,500	20,534	20,160	20,725	19,345	19,345
Former Soviet Union - 12	78,220	77,610	76,260	75,235	72,745	73,915
Middle East	63,222	63,240	63,661	63,545	64,905	64,745
North Africa	46,520	46,920	46,720	46,730	46,700	46,800
Sub-Saharan Africa	34,708	35,483	33,500	35,098	35,173	36,333
East Asia	167,368	161,359	160,615	166,364	163,553	163,573
South Asia	148,551	157,627	156,113	162,196	164,755	164,755
Southeast Asia	26,040	26,595	25,280	27,490	26,810	27,280
Oceania	9,460	10,015	9,665	8,665	8,610	8,710
Others	3,816	3,697	3,578	3,772	3,830	3,830
Total	777,168	788,796	781,825	798,322	793,753	797,558
Ending Stocks						
North America	29,207	22,532	19,770	21,654	26,988	26,222
South America	6,458	4,808	7,473	7,068	6,883	6,756
European Union	10,698	13,631	16,038	15,403	10,938	10,153
Other Europe	2,377	2,919	3,975	5,050	3,838	4,205
Former Soviet Union - 12	17,775	22,644	25,138	16,538	13,466	13,583
Middle East	16,309	14,216	17,907	18,990	17,217	16,947
North Africa	11,946	12,719	12,149	10,595	10,145	10,145
Sub-Saharan Africa	4,443	4,279	3,737	4,874	4,567	5,368
East Asia	141,907	139,716	141,687	137,671	137,731	137,762
South Asia	34,207	26,145	14,658	14,376	15,151	14,951
Southeast Asia	4,646	4,777	3,384	5,210	5,171	5,305
Oceania	3,326	3,848	4,687	3,941	4,108	4,141
Others	662	781	839	989	1,034	1,084
Total	283,961	273,015	271,442	262,359	257,237	256,622

NOTES: Regional definitions appear on last page of this circular. Imports are reported on a trade year basis. All other data are reported using local marketing years.

World Rice Trade
January/December Year, Thousand Metric Tons

	2020/21	2021/22	2022/23	2023/24	2024/25 Jul	2024/25 Aug
TY Exports						
India	21,240	22,122	17,733	17,000	18,000	18,000
Thailand	6,283	7,682	8,736	8,800	7,500	7,500
Vietnam	6,272	7,054	8,225	8,300	7,500	7,400
Pakistan	3,928	4,562	4,528	6,100	5,600	5,600
Cambodia	2,350	2,350	2,500	2,600	2,900	2,900
Burma	1,900	2,335	1,577	2,000	1,800	1,800
China	2,407	2,172	1,602	1,500	1,500	1,500
Brazil	782	1,445	1,208	1,000	1,300	1,200
Uruguay	704	982	991	875	1,000	1,000
Paraguay	640	752	857	800	850	850
Guyana	406	338	399	465	450	450
Argentina	400	402	293	300	425	425
European Union	412	402	365	360	400	400
Australia	72	207	248	260	270	270
Turkey	241	227	258	300	250	250
Others	1,690	1,575	1,375	1,410	1,329	1,369
Subtotal	49,727	54,607	50,895	52,070	51,074	50,914
United States	2,950	2,190	2,397	3,170	3,225	3,225
World Total	52,677	56,797	53,292	55,240	54,299	54,139
TY Imports						
Philippines	2,950	3,800	3,900	4,600	4,700	4,600
Vietnam	2,300	2,350	2,750	2,600	2,950	2,950
European Union	1,862	2,490	2,170	2,200	2,200	2,200
Nigeria	2,100	2,400	2,000	2,000	2,000	2,000
Iraq	1,315	2,124	1,845	2,200	1,900	1,900
Saudi Arabia	1,157	1,324	1,487	1,600	1,700	1,700
China	4,921	6,155	2,597	1,600	1,500	1,500
Indonesia	650	740	3,500	3,500	1,500	1,500
Cote d'Ivoire	1,450	1,560	1,313	1,450	1,450	1,500
Senegal	1,250	1,500	1,300	1,450	1,500	1,500
Malaysia	1,160	1,240	1,410	1,600	1,375	1,375
South Africa	1,000	1,034	1,221	1,100	1,150	1,150
Iran	880	1,250	751	1,100	1,100	1,100
Guinea	940	850	870	1,000	1,000	1,000
Brazil	685	826	982	1,100	1,050	950
United Arab Emirates	775	1,025	900	875	950	950
Mexico	759	796	734	850	840	860
Burkina Faso	600	706	767	850	850	850
Kenya	620	675	936	1,000	800	800
Mozambique	705	685	740	850	775	800
Ghana	1,050	620	810	725	650	700
United Kingdom	604	638	667	680	700	700
Japan	662	669	709	685	690	690
Somalia	500	610	480	600	650	650
Cameroon	600	600	400	650	600	600
Others	17,957	17,734	14,702	14,322	15,507	15,467
Subtotal	49,452	54,401	49,941	51,187	50,087	49,992
Unaccounted	2,247	1,081	1,991	2,628	2,737	2,672
United States	978	1,315	1,360	1,425	1,475	1,475
World Total	52,677	56,797	53,292	55,240	54,299	54,139

TY=Trade Year, see Endnotes. Note about dates: 2016/17 is calendar year 2017, 2017/18 is calendar year 2018, and so on.

World Rice Production, Consumption, and Stocks
Local Marketing Years, Thousand Metric Tons

	2020/21	2021/22	2022/23	2023/24	2024/25 Jul	2024/25 Aug
Milled Production						
China	148,300	148,990	145,946	144,620	146,000	146,000
India	124,368	129,471	135,755	137,000	138,000	138,000
Bangladesh	34,600	35,850	36,350	37,000	38,000	38,000
Indonesia	34,500	34,400	33,900	33,020	34,000	34,000
Vietnam	27,381	26,670	27,140	26,625	27,000	26,500
Thailand	18,863	19,878	20,909	20,000	20,100	20,100
Philippines	12,416	12,540	12,625	12,325	12,700	12,700
Burma	12,600	12,400	11,800	11,900	12,100	12,100
Pakistan	8,420	9,323	7,322	9,869	10,000	10,000
Brazil	8,001	7,337	6,822	7,225	7,500	7,500
Cambodia	6,271	6,561	6,963	7,174	7,377	7,377
Japan	7,570	7,636	7,480	7,272	7,200	7,200
Nigeria	5,148	5,255	5,355	5,355	5,481	5,481
Egypt	4,000	2,900	3,600	3,780	3,600	3,600
Nepal	3,744	3,417	3,654	3,530	3,600	3,600
Others	45,884	45,126	45,327	46,793	48,476	48,542
Subtotal	502,066	507,754	510,948	513,488	521,134	520,700
United States	7,205	6,066	5,082	6,931	7,039	7,009
World Total	509,271	513,820	516,030	520,419	528,173	527,709
Consumption and Residual						
China	150,293	156,360	154,994	148,115	145,000	145,000
India	101,052	110,446	114,510	117,500	120,000	120,000
Bangladesh	36,100	36,500	37,300	37,600	38,000	38,000
Indonesia	35,400	35,300	35,600	36,000	36,500	36,500
Vietnam	21,700	21,900	21,900	22,000	22,100	22,000
Philippines	14,800	15,400	16,100	16,600	17,500	17,300
Thailand	12,400	12,500	12,500	12,500	12,600	12,600
Burma	10,400	10,300	10,200	10,100	10,200	10,200
Japan	8,200	8,200	8,150	8,000	7,950	7,950
Nigeria	7,150	7,350	7,500	7,500	7,600	7,600
Brazil	7,350	7,150	7,000	7,100	6,950	7,100
Cambodia	4,400	4,400	4,450	4,450	4,500	4,500
Pakistan	3,700	3,900	3,925	4,000	4,100	4,100
Egypt	4,300	4,050	4,000	4,050	4,150	4,075
Nepal	4,969	4,412	4,249	3,855	4,000	4,000
Others	71,376	73,044	74,944	75,672	77,281	77,404
Subtotal	498,386	513,651	515,396	518,463	522,190	521,883
United States	4,841	4,740	4,596	4,985	5,080	5,080
World Total	503,227	518,391	519,992	523,448	527,270	526,963
Ending Stocks						
China	116,500	113,000	106,600	103,000	104,000	104,000
India	37,000	34,000	35,000	38,500	38,500	38,500
Indonesia	3,060	2,900	4,700	5,220	4,220	4,220
Philippines	2,363	3,103	3,378	3,603	3,678	3,603
Thailand	4,380	4,126	3,849	2,649	2,849	2,749
Bangladesh	1,458	2,091	2,409	1,828	1,918	1,918
Nigeria	1,690	2,045	2,175	1,830	1,711	1,711
Others	20,412	21,153	20,645	18,840	19,750	19,348
Subtotal	186,863	182,418	178,756	175,470	176,626	176,049
United States	1,387	1,261	961	1,218	1,462	1,385
World Total	188,250	183,679	179,717	176,688	178,088	177,434

Note: All data are reported on a milled basis.

Regional Rice Imports, Production, Consumption, and Stocks

Thousand Metric Tons

	2020/21	2021/22	2022/23	2023/24	Jul 2024/25	Aug 2024/25
TY Imports						
North America	2,147	2,635	2,567	2,750	2,815	2,835
Caribbean	992	1,021	1,040	1,005	1,005	1,005
South America	1,803	1,815	1,936	2,140	2,065	1,965
Other Europe	714	729	749	780	810	810
Former Soviet Union - 12	587	666	570	620	590	590
Middle East	6,205	7,947	7,217	7,920	7,975	7,975
North Africa	610	863	731	705	880	880
Sub-Saharan Africa	15,935	17,004	15,558	16,095	16,195	16,295
East Asia	6,562	7,738	4,100	3,275	3,150	3,150
South Asia	4,414	3,082	1,382	1,080	1,525	1,510
Southeast Asia	7,749	8,698	12,180	12,942	11,205	11,105
European Union	1,862	2,490	2,170	2,200	2,200	2,200
Total	50,430	55,716	51,301	52,612	51,562	51,467
Production						
North America	7,406	6,247	5,225	7,081	7,199	7,169
Caribbean	886	885	841	862	885	885
South America	17,308	16,529	15,983	16,700	17,375	17,375
European Union	1,826	1,732	1,287	1,380	1,716	1,716
Former Soviet Union - 12	1,397	1,339	1,177	1,314	1,326	1,392
Middle East	2,900	2,723	2,607	2,560	2,860	2,860
North Africa	4,042	2,945	3,642	3,825	3,645	3,645
Sub-Saharan Africa	19,959	20,078	21,400	21,938	22,306	22,306
East Asia	162,001	162,961	159,653	158,087	159,365	159,365
South Asia	174,807	181,065	186,175	191,001	193,370	193,370
Southeast Asia	115,732	116,077	116,988	114,585	116,998	116,498
Total	509,271	513,820	516,030	520,419	528,173	527,709
Domestic Consumption						
North America	6,213	6,158	5,984	6,410	6,545	6,550
Central America	1,336	1,406	1,403	1,463	1,493	1,498
Caribbean	1,945	1,859	1,939	1,665	1,863	1,860
South America	14,975	14,915	14,712	14,908	14,830	14,980
European Union	3,400	3,500	3,300	3,250	3,350	3,350
Former Soviet Union - 12	1,703	1,714	1,590	1,763	1,770	1,796
Middle East	9,194	9,637	9,807	10,035	10,450	10,455
North Africa	4,625	4,359	4,329	4,605	4,675	4,600
Sub-Saharan Africa	34,490	35,736	37,802	37,347	38,302	38,312
East Asia	165,430	171,385	169,913	163,280	159,830	159,830
South Asia	149,758	159,193	163,945	167,105	170,295	170,370
Southeast Asia	104,251	104,965	106,039	107,006	108,881	108,581
Total	498,431	515,952	521,918	520,027	523,511	523,409
Ending Stocks						
North America	1,591	1,404	1,049	1,321	1,545	1,508
Central America	237	231	324	305	297	290
Caribbean	327	340	367	451	476	476
South America	2,858	2,311	1,877	2,058	2,118	2,193
European Union	682	905	811	681	847	847
Middle East	1,483	1,733	1,935	1,880	2,015	2,010
North Africa	1,159	613	600	550	470	470
Sub-Saharan Africa	3,319	4,038	4,666	4,298	4,087	4,132
East Asia	119,971	116,721	110,305	106,347	107,207	107,207
South Asia	40,730	39,290	40,019	42,486	42,717	42,717
Southeast Asia	15,571	15,538	17,325	15,871	15,848	15,118
Oceania	86	240	196	201	211	211
Total	188,250	183,679	179,717	176,688	178,088	177,434

NOTES: Regional definitions appear on last page of this circular. Imports are reported on a trade year basis. All other data are reported using local marketing years.

World Coarse Grain Trade
October/September Year, Thousand Metric Tons

	2020/21	2021/22	2022/23	2023/24	2024/25 Jul	2024/25 Aug
TY Exports						
Brazil	27,504	31,938	53,307	51,135	51,085	51,085
Argentina	40,977	44,418	29,448	37,201	41,400	41,400
Ukraine	29,049	29,895	29,765	31,853	26,770	26,470
European Union	12,553	12,812	11,052	11,355	11,270	10,370
Russia	9,871	7,375	11,515	12,460	9,000	8,475
Australia	9,705	11,109	10,500	9,410	8,360	8,410
Canada	7,219	5,552	7,851	5,830	5,630	5,630
South Africa	2,756	3,841	3,626	2,630	3,420	3,020
Paraguay	2,564	3,208	4,006	3,140	3,235	2,735
Burma	2,600	2,300	2,000	1,800	1,700	1,800
Others	14,885	14,006	12,472	11,985	10,093	9,343
Subtotal	159,683	166,454	175,542	178,799	171,963	168,738
United States	75,623	70,394	45,900	63,136	62,010	62,710
World Total	235,306	236,848	221,442	241,935	233,973	231,448
TY Imports						
China	50,531	41,499	32,619	45,450	41,250	39,950
Mexico	17,301	18,498	20,297	23,335	22,775	22,775
European Union	15,820	21,567	25,639	21,640	19,550	19,570
Japan	16,972	16,506	16,450	16,965	16,910	16,910
Vietnam	11,947	9,653	10,122	11,850	12,500	12,200
Korea, South	11,804	11,617	11,228	11,417	11,898	11,898
Iran	10,902	10,302	8,000	10,000	10,400	10,000
Egypt	9,653	9,771	6,238	7,507	8,070	7,870
Colombia	6,132	6,846	6,697	6,830	6,950	6,950
Saudi Arabia	9,128	8,778	6,394	5,510	6,805	6,805
Algeria	5,004	3,965	4,236	5,605	5,605	5,605
Taiwan	4,472	4,644	4,269	4,680	4,775	4,775
Peru	3,851	3,646	3,495	3,750	3,850	3,850
Malaysia	3,726	3,697	3,476	3,680	3,730	3,730
Morocco	2,937	2,724	2,979	3,806	3,556	3,556
Canada	1,871	6,341	2,296	3,098	2,791	2,791
United Kingdom	2,695	2,637	2,166	2,716	2,590	2,590
Chile	2,557	2,564	2,430	2,480	2,470	2,270
Turkey	3,395	5,861	4,360	3,157	2,105	2,105
Brazil	2,679	4,064	2,353	2,075	1,915	1,915
Guatemala	1,358	1,574	1,618	1,700	1,800	1,800
Jordan	1,180	1,956	1,863	1,400	1,700	1,700
Tunisia	2,004	1,795	1,587	1,600	1,700	1,700
Thailand	2,881	1,568	1,965	1,800	1,600	1,600
Libya	1,725	1,395	1,543	1,400	1,550	1,550
Others	24,494	25,685	23,843	25,269	24,300	24,236
Subtotal	227,019	229,153	208,163	228,720	223,145	220,701
Unaccounted	5,758	5,043	9,925	10,714	8,353	8,272
United States	2,529	2,652	3,354	2,501	2,475	2,475
World Total	235,306	236,848	221,442	241,935	233,973	231,448

TY=Trade Year, see Endnotes.

World Coarse Grains Production, Consumption, and Stocks
Local Marketing Years, Thousand Metric Tons

	2020/21	2021/22	2022/23	2023/24	2024/25 Jul	2024/25 Aug
Production						
China	269,083	281,549	285,704	297,142	300,300	300,300
European Union	155,464	155,030	133,057	136,407	145,690	140,650
Brazil	90,608	120,506	143,479	128,540	133,762	133,762
Argentina	63,009	61,142	42,914	58,333	59,491	59,491
India	51,387	51,385	56,776	56,013	56,000	56,900
Russia	41,396	38,538	44,132	42,540	39,230	37,400
Ukraine	39,585	53,514	33,925	39,780	33,470	33,322
Mexico	32,662	32,785	33,877	27,815	30,360	30,360
Canada	29,644	25,124	30,535	27,163	27,115	27,115
Nigeria	20,895	21,397	21,696	19,012	20,100	20,100
Ethiopia	18,560	17,373	17,466	17,560	17,910	17,910
South Africa	17,814	16,636	17,527	14,511	17,533	17,533
Australia	18,560	19,219	18,842	14,544	15,369	15,369
Turkey	15,812	11,477	14,839	17,045	15,060	15,060
Indonesia	12,600	12,700	12,400	12,700	13,200	13,200
Others	195,639	187,880	188,122	186,493	190,268	189,438
Subtotal	1,072,718	1,106,255	1,095,291	1,095,598	1,114,858	1,107,910
United States	372,258	396,297	356,449	402,886	397,525	396,381
World Total	1,444,976	1,502,552	1,451,740	1,498,484	1,512,383	1,504,291
Domestic Consumption						
China	312,707	320,711	321,568	336,350	340,650	339,350
European Union	159,483	158,273	150,072	148,145	153,275	150,680
Brazil	74,612	76,039	84,985	86,508	87,637	87,637
India	47,546	48,045	53,703	55,927	56,850	58,150
Mexico	49,835	50,765	52,745	53,180	53,200	53,200
Russia	31,042	31,109	33,150	30,390	30,830	29,550
Canada	24,628	25,792	24,759	25,242	24,495	24,495
Nigeria	20,955	21,177	21,591	20,159	20,000	20,200
Argentina	20,220	19,344	17,630	18,523	18,841	18,841
Ethiopia	18,644	17,898	17,382	17,800	17,930	17,930
Turkey	18,112	17,609	17,954	17,059	17,470	17,470
Japan	17,290	16,822	16,804	17,185	17,190	17,190
Egypt	17,273	17,891	14,556	15,740	16,540	16,340
Vietnam	17,200	15,300	14,472	14,600	15,250	15,050
Iran	15,320	14,720	13,520	14,320	15,170	14,770
Others	299,324	287,481	282,186	282,246	289,847	289,218
Subtotal	1,144,041	1,162,456	1,144,248	1,165,749	1,180,592	1,175,812
United States	317,604	324,909	314,967	329,147	331,332	330,260
World Total	1,461,645	1,487,365	1,459,215	1,494,896	1,511,924	1,506,072
Ending Stocks						
China	207,691	210,020	206,765	212,982	213,857	213,857
European Union	14,507	18,805	16,174	14,634	14,972	13,774
Brazil	5,120	4,536	10,724	4,496	3,551	3,551
Mexico	3,604	3,944	5,296	3,250	2,854	3,154
India	3,359	3,387	3,589	3,765	2,475	2,755
Argentina	3,998	5,582	2,135	2,459	2,714	2,714
Canada	3,628	3,706	3,717	2,921	2,727	2,702
Others	50,452	54,104	48,548	42,867	38,910	37,928
Subtotal	292,359	304,084	296,948	287,374	282,060	280,435
United States	34,013	37,475	37,136	50,298	56,341	55,456
World Total	326,372	341,559	334,084	337,672	338,401	335,891

Regional Coarse Grains Imports, Production, Consumption, and Stocks

Thousand Metric Tons

	2020/21	2021/22	2022/23	2023/24	Jul 2024/25	Aug 2024/25
TY Imports						
North America	21,701	27,491	25,947	28,934	28,041	28,041
Central America	4,744	5,400	5,450	5,650	5,850	5,850
Caribbean	2,394	2,151	2,009	2,120	2,236	2,236
South America	16,844	18,716	16,918	16,805	16,443	16,243
European Union	15,820	21,567	25,639	21,640	19,550	19,570
Former Soviet Union - 12	771	807	1,290	950	1,102	937
Middle East	32,289	33,443	26,328	26,557	26,886	26,486
North Africa	21,323	19,650	16,583	19,918	20,481	20,281
Sub-Saharan Africa	3,591	3,963	3,694	4,462	4,651	4,651
East Asia	83,818	74,316	64,611	78,557	74,878	73,578
Southeast Asia	20,169	17,339	17,979	20,390	20,325	20,025
Others	6,084	6,962	5,069	5,238	5,177	5,278
Total	229,548	231,805	211,517	231,221	225,620	223,176
Production						
North America	434,564	454,206	420,861	457,864	455,000	453,856
South America	168,489	198,994	202,131	201,406	210,200	210,200
European Union	155,464	155,030	133,057	136,407	145,690	140,650
Other Europe	21,820	18,070	16,675	18,372	19,278	18,378
Former Soviet Union - 12	94,843	105,816	91,079	95,655	86,873	84,965
Middle East	26,534	17,922	21,561	23,930	23,969	23,969
North Africa	9,799	12,704	11,099	10,811	11,177	11,177
Sub-Saharan Africa	132,985	126,076	131,389	124,515	125,426	125,426
East Asia	271,807	284,367	288,514	299,960	303,128	303,128
South Asia	69,463	69,687	76,955	75,098	75,418	76,318
Southeast Asia	35,693	35,481	34,714	35,030	35,920	35,920
Oceania	19,111	19,778	19,393	15,121	15,924	15,924
Others	4,404	4,421	4,312	4,315	4,380	4,380
Total	1,444,976	1,502,552	1,451,740	1,498,484	1,512,383	1,504,291
Domestic Consumption						
North America	392,067	401,466	392,471	407,569	409,027	407,955
South America	122,073	122,415	129,651	131,800	134,412	134,212
European Union	159,483	158,273	150,072	148,145	153,275	150,680
Other Europe	20,688	18,928	17,827	18,247	19,706	19,514
Former Soviet Union - 12	56,730	57,151	54,725	51,281	52,058	50,791
Middle East	56,990	52,657	48,607	48,288	52,111	51,711
North Africa	32,953	31,904	26,979	31,296	32,196	31,996
Sub-Saharan Africa	129,813	124,479	130,130	127,342	127,014	127,464
East Asia	349,032	356,452	356,747	372,199	377,080	375,780
South Asia	68,356	68,611	75,183	75,201	77,084	77,984
Southeast Asia	53,211	51,326	49,746	50,864	52,259	52,059
Oceania	8,791	8,394	8,257	8,243	7,944	7,844
Others	11,608	11,829	11,649	12,046	12,341	12,341
Total	1,461,795	1,463,885	1,452,044	1,482,521	1,506,507	1,500,331
Ending Stocks						
North America	41,245	45,125	46,149	56,469	61,922	61,312
South America	12,533	13,304	15,563	9,257	8,487	8,486
European Union	14,507	18,805	16,174	14,634	14,972	13,774
Other Europe	2,971	2,655	2,393	2,796	2,346	2,147
Former Soviet Union - 12	5,219	12,315	7,657	6,139	4,119	4,068
Middle East	6,595	5,209	5,740	6,280	5,580	5,579
North Africa	2,765	3,229	2,918	3,164	2,775	2,825
Sub-Saharan Africa	13,295	13,005	12,520	9,990	9,100	8,954
East Asia	212,080	214,303	210,671	216,964	217,865	217,865
South Asia	5,647	5,329	6,271	5,771	4,903	4,735
Southeast Asia	5,545	3,605	3,146	3,555	3,462	3,428
Oceania	3,084	3,722	3,995	1,742	1,844	1,692
Others	886	953	887	911	1,026	1,026
Total	326,372	341,559	334,084	337,672	338,401	335,891

NOTES: Regional definitions appear on last page of this circular. Imports are reported on a trade year basis. All other data are reported using local marketing years.

World Corn Trade
October/September Year, Thousand Metric Tons

	2020/21	2021/22	2022/23	2023/24	2024/25 Jul	2024/25 Aug
TY Exports						
Brazil	27,492	31,921	53,285	51,000	51,000	51,000
Argentina	36,544	38,853	25,740	33,000	37,000	37,000
Ukraine	23,864	26,980	27,122	29,500	24,500	24,000
Russia	3,989	4,000	5,900	6,200	4,600	4,200
European Union	3,735	6,027	4,196	4,400	4,000	3,500
South Africa	2,751	3,830	3,619	2,600	3,400	3,000
Paraguay	2,563	3,187	3,968	3,100	3,200	2,700
Burma	2,600	2,300	2,000	1,800	1,700	1,800
Canada	1,592	2,200	2,839	1,800	1,700	1,700
Serbia	3,157	1,495	534	2,100	2,100	1,600
Others	7,669	9,842	8,798	6,760	5,042	4,592
Subtotal	115,956	130,635	138,001	142,260	138,242	135,092
United States	68,293	62,903	42,844	57,000	56,000	58,000
World Total	184,249	193,538	180,845	199,260	194,242	193,092
TY Imports						
China	29,512	21,884	18,711	23,000	23,000	23,000
Mexico	16,498	17,584	19,392	22,500	22,000	22,000
European Union	14,493	19,735	23,188	19,500	18,000	18,000
Japan	15,471	15,003	14,927	15,500	15,500	15,500
Korea, South	11,708	11,510	11,099	11,300	11,800	11,800
Vietnam	11,200	9,100	9,500	11,500	12,000	11,700
Iran	7,200	8,600	6,700	8,500	8,600	8,200
Egypt	9,633	9,763	6,215	7,500	8,000	7,800
Colombia	5,795	6,512	6,343	6,500	6,600	6,600
Algeria	4,215	3,273	4,069	4,900	5,000	5,000
Taiwan	4,386	4,553	4,193	4,600	4,700	4,700
Saudi Arabia	3,017	4,071	3,289	4,000	4,600	4,600
Malaysia	3,700	3,678	3,448	3,650	3,700	3,700
Peru	3,679	3,514	3,324	3,600	3,700	3,700
Canada	1,550	6,108	2,237	3,000	2,700	2,700
Morocco	2,474	1,963	2,244	2,500	2,800	2,700
United Kingdom	2,546	2,521	2,036	2,500	2,450	2,450
Chile	2,333	2,497	2,344	2,400	2,400	2,200
Guatemala	1,358	1,574	1,618	1,700	1,800	1,800
Turkey	1,761	3,782	2,388	3,000	1,700	1,700
Dominican Republic	1,492	1,354	1,386	1,500	1,550	1,550
Thailand	1,838	1,480	1,346	1,700	1,500	1,500
Brazil	2,281	3,316	1,684	1,500	1,400	1,400
Costa Rica	829	852	1,010	1,000	1,100	1,100
Indonesia	936	1,154	901	1,600	1,100	1,100
Others	19,312	21,030	18,655	19,676	19,084	19,219
Subtotal	179,217	186,411	172,247	188,626	186,784	185,719
Unaccounted	4,403	6,520	7,577	9,934	6,808	6,723
United States	629	607	1,021	700	650	650
World Total	184,249	193,538	180,845	199,260	194,242	193,092

TY=Trade Year, see Endnotes.

World Corn Production, Consumption, and Stocks
Local Marketing Years, Thousand Metric Tons

	2020/21	2021/22	2022/23	2023/24	2024/25 Jul	2024/25 Aug
Production						
China	260,670	272,552	277,200	288,842	292,000	292,000
Brazil	87,000	116,000	137,000	122,000	127,000	127,000
European Union	67,440	71,672	52,329	61,454	64,000	60,500
Argentina	55,000	52,000	36,000	50,000	51,000	51,000
India	31,647	33,730	38,085	37,500	37,500	37,500
Ukraine	30,297	42,126	27,000	32,500	27,700	27,200
Mexico	27,346	26,762	28,077	22,700	25,000	25,000
South Africa	16,951	16,137	17,100	14,000	17,000	17,000
Canada	13,563	14,611	14,539	15,076	14,500	14,500
Russia	13,872	15,225	15,832	16,600	15,000	14,100
Indonesia	12,600	12,700	12,400	12,700	13,200	13,200
Nigeria	12,400	12,745	12,949	11,053	11,000	11,000
Ethiopia	10,022	9,400	10,200	10,000	10,200	10,200
Pakistan	8,940	9,525	10,985	9,847	9,500	9,500
Philippines	8,352	8,344	8,322	8,100	8,500	8,500
Others	117,943	122,675	114,984	121,740	118,131	116,883
Subtotal	774,043	836,204	813,002	834,112	841,231	835,083
United States	357,819	381,469	346,739	389,694	383,558	384,741
World Total	1,131,862	1,217,673	1,159,741	1,223,806	1,224,789	1,219,824
Total Consumption						
China	285,000	291,000	299,000	307,000	313,000	313,000
Brazil	70,500	71,000	78,000	79,500	80,500	80,500
European Union	77,700	81,700	74,800	77,100	78,100	75,600
Mexico	43,800	44,000	46,000	47,000	47,100	47,100
India	27,850	30,000	34,700	37,400	38,000	38,400
Japan	15,450	15,040	15,000	15,500	15,550	15,550
Canada	13,976	17,984	14,927	16,300	15,500	15,500
Egypt	16,400	17,000	13,700	14,800	15,600	15,400
Argentina	16,800	15,700	14,200	14,800	14,800	14,800
Vietnam	16,450	14,750	13,850	14,250	14,750	14,550
Indonesia	13,300	13,800	13,400	14,000	14,400	14,400
South Africa	13,220	12,655	13,239	13,000	13,400	13,400
Korea, South	11,780	11,560	11,350	11,350	11,850	11,850
Nigeria	12,500	12,600	12,900	12,200	11,000	11,200
Russia	10,000	11,100	10,000	10,600	10,800	10,300
Others	198,340	202,315	192,812	200,570	200,543	199,298
Subtotal	841,032	883,978	864,728	897,674	900,191	896,466
United States	308,215	315,665	305,928	320,435	322,087	321,706
World Total	1,149,247	1,199,643	1,170,656	1,218,109	1,222,278	1,218,172
Ending Stocks						
China	205,704	209,137	206,040	210,862	212,842	212,842
European Union	7,828	11,508	8,029	7,483	7,490	6,883
Brazil	4,653	3,971	10,041	3,841	2,841	2,841
Mexico	3,079	3,175	4,594	2,764	2,334	2,634
Korea, South	2,018	2,056	1,898	1,942	1,987	1,987
India	2,028	2,395	2,658	2,758	1,578	1,858
Argentina	3,132	4,748	1,324	1,539	1,744	1,744
Others	35,908	41,773	33,688	29,912	27,561	26,717
Subtotal	264,350	278,763	268,272	261,101	258,377	257,506
United States	31,358	34,975	34,551	47,419	53,261	52,666
World Total	295,708	313,738	302,823	308,520	311,638	310,172

Regional Corn Imports, Production, Consumption, and Stocks

Thousand Metric Tons

	2020/21	2021/22	2022/23	2023/24	Jul 2024/25	Aug 2024/25
TY Imports						
North America	18,677	24,299	22,650	26,200	25,350	25,350
Central America	4,744	5,400	5,450	5,650	5,850	5,850
South America	15,639	17,371	15,503	15,585	15,270	15,070
European Union	14,493	19,735	23,188	19,500	18,000	18,000
Former Soviet Union - 12	322	429	472	346	256	291
Middle East	17,805	21,804	17,086	20,920	19,750	19,350
North Africa	18,000	16,809	14,142	16,600	17,600	17,300
Sub-Saharan Africa	2,895	3,384	2,962	3,674	3,973	3,973
East Asia	61,116	53,000	48,975	54,445	55,045	55,045
Southeast Asia	18,130	16,222	16,394	19,735	19,520	19,220
Caribbean	2,391	2,147	2,008	2,115	2,235	2,235
Others	5,634	6,418	4,438	4,556	4,585	4,685
Total	179,846	187,018	173,268	189,326	187,434	186,369
Production						
North America	398,728	422,842	389,355	427,470	423,058	424,241
South America	153,223	182,556	185,815	183,730	191,920	191,920
European Union	67,440	71,672	52,329	61,454	64,000	60,500
Other Europe	10,320	7,591	5,875	8,210	8,448	7,548
Former Soviet Union - 12	48,974	64,144	47,724	55,089	48,805	47,057
Middle East	9,315	8,753	9,461	10,948	9,849	9,849
North Africa	6,433	7,507	7,487	7,262	7,672	7,672
Sub-Saharan Africa	85,615	86,374	85,664	83,347	80,254	80,254
East Asia	263,041	275,026	279,702	291,348	294,510	294,510
South Asia	48,795	51,243	57,255	55,581	55,924	55,924
Central America	3,431	3,499	3,511	3,526	3,526	3,526
Southeast Asia	35,403	35,191	34,424	34,740	35,630	35,630
Others	1,144	1,275	1,139	1,101	1,193	1,193
Total	1,131,862	1,217,673	1,159,741	1,223,806	1,224,789	1,219,824
Domestic Consumption						
North America	365,991	377,649	366,855	383,735	384,687	384,306
South America	110,489	110,565	115,858	117,935	119,770	119,570
European Union	77,700	81,700	74,800	77,100	78,100	75,600
Other Europe	10,063	9,049	8,488	8,748	9,325	9,135
Former Soviet Union - 12	22,290	24,963	19,990	20,260	20,720	20,015
Middle East	26,830	30,102	25,762	29,730	29,055	28,655
North Africa	25,980	23,910	20,987	24,250	25,200	24,900
Sub-Saharan Africa	82,310	83,547	83,992	85,228	81,514	81,964
East Asia	319,169	324,650	332,095	340,895	347,545	347,545
South Asia	47,720	49,747	55,143	55,671	57,240	57,240
Southeast Asia	50,956	49,859	47,910	49,920	51,165	50,965
Central America	8,295	8,720	8,816	9,140	9,274	9,274
Others	3,488	3,408	3,110	3,193	3,385	3,385
Total	1,151,281	1,177,869	1,163,806	1,205,805	1,216,980	1,212,554
Ending Stocks						
North America	36,606	40,896	40,773	51,787	57,199	56,904
South America	10,698	11,521	13,597	7,280	6,365	6,364
European Union	7,828	11,508	8,029	7,483	7,490	6,883
Other Europe	1,547	1,324	743	1,044	959	752
Former Soviet Union - 12	2,210	9,661	4,380	3,267	2,005	1,950
Middle East	3,233	3,043	3,036	2,889	2,888	2,888
North Africa	1,897	2,012	2,162	2,122	1,944	1,993
Sub-Saharan Africa	11,067	11,603	10,893	8,692	7,567	7,421
East Asia	209,833	213,206	209,780	214,658	216,648	216,648
South Asia	4,285	4,324	5,330	4,756	3,997	3,829
Southeast Asia	5,539	3,596	3,137	3,546	3,453	3,419
Central America	701	802	758	784	881	881
Others	264	242	205	212	242	240
Total	295,708	313,738	302,823	308,520	311,638	310,172

NOTES: Regional definitions appear on last page of this circular. Imports are reported on a trade year basis. All other data are reported using local marketing years.

World Barley Trade
October/September Year, Thousand Metric Tons

	2020/21	2021/22	2022/23	2023/24	2024/25 Jul	2024/25 Aug
TY Exports						
European Union	8,559	6,355	6,614	6,600	7,000	6,600
Australia	8,007	8,233	7,084	7,400	6,000	6,000
Russia	5,691	3,100	5,400	5,800	4,000	4,000
Argentina	2,458	3,765	2,908	3,100	3,200	3,200
Ukraine	5,053	2,710	2,559	2,300	2,200	2,400
Canada	3,520	1,973	2,899	2,350	2,300	2,300
Kazakhstan	1,028	563	1,253	1,300	1,300	1,500
United Kingdom	1,280	785	1,061	800	850	850
Uruguay	185	317	127	325	125	125
Serbia	131	125	100	110	120	120
Others	1,109	493	337	382	309	309
Subtotal	37,021	28,419	30,342	30,467	27,404	27,404
United States	349	68	57	100	75	75
World Total	37,370	28,487	30,399	30,567	27,479	27,479
TY Imports						
China	12,049	8,282	8,582	14,500	10,200	10,200
Saudi Arabia	6,100	4,700	3,100	1,500	2,200	2,200
Iran	3,700	1,700	1,300	1,500	1,800	1,800
European Union	1,150	1,237	2,157	1,800	1,300	1,400
Japan	1,132	1,184	1,227	1,250	1,200	1,200
Jordan	484	1,166	1,261	700	1,000	1,000
Morocco	456	760	734	1,300	750	850
Tunisia	1,008	845	766	700	750	750
Libya	1,043	535	750	600	700	700
Algeria	778	688	162	700	600	600
Brazil	398	734	652	550	500	500
Mexico	499	363	544	500	500	500
Vietnam	747	553	622	350	500	500
Qatar	358	292	394	300	450	450
Kuwait	507	551	410	300	400	400
Turkey	1,634	2,036	1,967	150	400	400
Colombia	336	333	353	330	350	350
Kazakhstan	82	91	429	250	500	300
United Arab Emirates	453	337	260	350	300	300
India	14	101	253	100	200	200
Others	3,653	2,339	2,507	2,268	1,831	1,831
Subtotal	36,581	28,827	28,430	29,998	26,431	26,431
Unaccounted	652	-798	1,511	294	748	748
United States	137	458	458	275	300	300
World Total	37,370	28,487	30,399	30,567	27,479	27,479

TY=Trade Year, see Endnotes.

World Barley Production, Consumption, and Stocks
Local Marketing Years, Thousand Metric Tons

	2020/21	2021/22	2022/23	2023/24	2024/25 Jul	2024/25 Aug
Production						
European Union	54,235	52,065	51,829	47,856	52,800	51,900
Russia	20,629	17,505	21,500	20,500	18,200	18,300
Australia	14,649	14,337	14,137	10,800	11,500	11,500
Canada	10,741	6,984	9,987	8,896	8,600	8,600
United Kingdom	8,117	6,961	7,385	6,963	7,500	7,500
Turkey	8,100	4,500	7,400	8,000	7,100	7,100
Ukraine	7,947	9,923	6,100	6,350	5,000	5,300
Argentina	4,035	5,300	4,695	5,100	4,700	4,700
Kazakhstan	3,659	2,367	3,287	2,614	3,100	3,400
Iran	3,600	2,700	3,000	3,000	3,100	3,100
Ethiopia	2,261	2,350	2,184	2,450	2,485	2,485
China	2,036	2,134	2,192	2,000	2,000	2,000
India	1,720	1,656	1,371	1,913	1,500	1,500
Iraq	1,850	360	235	200	1,400	1,400
Algeria	1,213	950	1,400	1,025	1,200	1,200
Others	13,003	12,562	10,410	10,745	11,625	11,775
Subtotal	157,795	142,654	147,112	138,412	141,810	141,760
United States	3,717	2,626	3,787	4,029	3,257	3,240
World Total	161,512	145,280	150,899	142,441	145,067	145,000
Total Consumption						
European Union	48,250	45,450	46,700	43,300	46,500	46,700
Russia	14,400	14,300	16,700	14,700	14,400	14,500
China	12,600	11,600	11,000	15,100	13,300	13,300
Turkey	9,000	7,400	8,700	7,300	8,400	8,400
United Kingdom	7,215	6,380	6,046	6,200	7,100	7,100
Canada	7,747	5,399	6,699	6,500	6,600	6,600
Australia	6,500	6,000	6,000	5,800	6,000	5,900
Iran	6,900	4,700	5,300	4,400	5,100	5,100
Ukraine	4,100	4,100	3,400	3,500	3,300	3,400
Saudi Arabia	7,025	4,225	4,325	2,025	3,025	3,025
Ethiopia	2,325	2,375	2,200	2,500	2,450	2,450
Morocco	1,165	3,120	1,586	2,400	2,200	2,300
Kazakhstan	2,550	2,300	2,450	1,950	2,200	2,100
India	1,900	1,700	1,600	1,883	1,800	1,800
Algeria	2,250	1,950	1,400	1,900	1,750	1,750
Others	24,130	21,204	20,684	19,406	21,553	21,693
Subtotal	158,182	144,589	145,002	138,223	144,486	144,926
United States	3,860	3,532	3,628	3,946	3,593	3,593
World Total	162,042	148,121	148,630	142,169	148,079	148,519
Ending Stocks						
European Union	5,011	5,287	5,726	5,432	5,647	5,432
Australia	2,518	2,848	3,220	1,120	1,220	1,120
United Kingdom	1,058	964	1,268	1,411	1,056	1,056
Saudi Arabia	1,002	991	980	967	946	946
Turkey	512	306	922	1,687	687	687
Canada	711	543	709	870	665	640
Ukraine	661	780	770	1,122	624	624
Others	8,353	6,012	5,781	6,776	5,461	5,474
Subtotal	19,826	17,731	19,376	19,385	16,306	15,979
United States	1,555	809	1,433	1,696	1,600	1,583
World Total	21,381	18,540	20,809	21,081	17,906	17,562

Regional Barley Imports, Production, Consumption, and Stocks

Thousand Metric Tons

	2020/21	2021/22	2022/23	2023/24	Jul 2024/25	Aug 2024/25
TY Imports						
North America	937	1,025	1,038	855	870	870
South America	927	1,261	1,209	1,050	1,030	1,030
European Union	1,150	1,237	2,157	1,800	1,300	1,400
Other Europe	191	198	171	348	181	181
Former Soviet Union - 12	425	366	793	584	834	634
Middle East	14,426	11,506	9,207	5,580	7,100	7,100
North Africa	3,305	2,835	2,434	3,305	2,870	2,970
Sub-Saharan Africa	19	61	109	145	60	60
East Asia	13,273	9,576	9,935	15,865	11,495	11,495
South Asia	34	109	280	111	211	211
Oceania	46	45	19	30	30	30
Total	36,718	29,285	28,888	30,273	26,731	26,731
Production						
North America	15,363	10,700	14,569	13,705	12,637	12,620
South America	5,756	7,112	6,535	6,690	6,486	6,486
European Union	54,235	52,065	51,829	47,856	52,800	51,900
Other Europe	9,699	8,531	8,961	8,489	9,051	9,051
Former Soviet Union - 12	35,702	32,811	34,178	32,685	29,750	30,600
Middle East	15,919	7,938	10,925	11,809	12,902	12,902
North Africa	2,529	4,348	2,748	2,654	2,600	2,600
Sub-Saharan Africa	3,004	2,837	2,646	3,007	3,035	3,035
East Asia	2,385	2,474	2,494	2,309	2,315	2,315
South Asia	1,933	1,802	1,547	2,079	1,656	1,656
Oceania	14,987	14,662	14,467	11,158	11,835	11,835
Total	161,512	145,280	150,899	142,441	145,067	145,000
Domestic Consumption						
North America	12,907	10,431	11,677	11,796	11,493	11,493
South America	4,232	4,270	4,592	4,286	4,294	4,294
European Union	48,250	45,450	46,700	43,300	46,500	46,700
Other Europe	8,765	7,930	7,580	7,729	8,615	8,620
Former Soviet Union - 12	24,662	23,755	25,992	23,515	23,456	23,691
Middle East	28,802	21,209	21,623	17,316	21,797	21,797
North Africa	6,108	7,146	5,112	6,140	6,090	6,190
Sub-Saharan Africa	2,982	2,913	2,793	3,125	3,060	3,060
East Asia	14,283	13,278	12,703	16,765	14,895	14,895
South Asia	2,120	1,872	1,799	2,048	1,956	1,956
Oceania	6,900	6,350	6,355	6,190	6,365	6,265
Total	161,917	145,735	148,418	142,810	149,271	149,711
Ending Stocks						
North America	2,676	1,802	2,560	2,914	2,593	2,551
South America	955	901	1,005	935	832	832
European Union	5,011	5,287	5,726	5,432	5,647	5,432
Other Europe	1,226	1,125	1,453	1,623	1,254	1,252
Former Soviet Union - 12	2,325	2,058	2,568	2,302	1,659	1,674
Middle East	3,342	2,133	2,682	3,378	2,683	2,683
North Africa	862	1,197	746	1,030	810	810
Sub-Saharan Africa	432	388	327	314	319	319
East Asia	1,842	614	340	1,749	664	664
South Asia	144	128	131	235	176	176
Oceania	2,560	2,898	3,262	1,160	1,260	1,160
Total	21,381	18,540	20,809	21,081	17,906	17,562

NOTES: Regional definitions appear on last page of this circular. Imports are reported on a trade year basis. All other data are reported using local marketing years.

World Sorghum Trade
October/September Year, Thousand Metric Tons

	2020/21	2021/22	2022/23	2023/24	2024/25 Jul	2024/25 Aug
TY Exports						
Australia	1,235	2,267	2,753	1,600	1,900	1,900
Argentina	1,973	1,800	800	1,100	1,200	1,200
Brazil	11	10	1	125	75	75
India	56	41	37	30	50	50
Nigeria	50	50	50	50	50	50
Ukraine	59	72	66	40	50	50
Paraguay	1	21	38	40	35	35
Others	247	165	70	88	87	87
Subtotal	3,632	4,426	3,815	3,073	3,447	3,447
United States	6,926	7,387	2,965	6,000	5,900	4,600
World Total	10,558	11,813	6,780	9,073	9,347	8,047
TY Imports						
China	8,669	10,991	4,863	7,500	7,600	6,300
Japan	299	258	241	160	150	150
Mexico	133	362	176	175	150	150
Kenya	181	79	152	100	100	100
South Africa	8	1	29	100	75	75
Eritrea	65	95	63	70	70	70
South Sudan	71	55	35	50	50	50
Somalia	50	50	50	50	50	50
Sudan	125	75	110	50	50	50
Taiwan	56	55	50	50	45	45
Others	310	509	298	355	328	328
Subtotal	9,967	12,530	6,067	8,660	8,668	7,368
Unaccounted	590	-717	713	412	679	679
United States	1	0	0	1	0	0
World Total	10,558	11,813	6,780	9,073	9,347	8,047

TY=Trade Year, see Endnotes.

World Sorghum Production, Consumption, and Stocks
Local Marketing Years, Thousand Metric Tons

	2020/21	2021/22	2022/23	2023/24	2024/25 Jul	2024/25 Aug
Production						
Nigeria	6,590	6,725	6,806	6,400	7,200	7,200
Brazil	2,097	2,854	4,787	4,909	5,000	5,000
Sudan	5,150	3,528	5,248	3,055	5,000	5,000
Mexico	4,348	4,840	4,892	4,280	4,500	4,500
India	4,812	4,150	3,814	4,400	4,200	4,400
Ethiopia	5,058	4,450	4,140	4,010	4,100	4,100
Argentina	3,319	2,883	1,610	2,500	3,000	3,000
China	2,970	3,377	3,094	3,000	3,000	3,000
Australia	1,639	2,648	2,638	2,200	2,200	2,200
Niger	2,132	1,207	2,100	1,700	1,900	1,900
Burkina Faso	1,840	1,644	2,014	1,772	1,900	1,900
Mali	1,823	1,248	1,582	1,528	1,500	1,500
Cameroon	1,200	1,200	1,200	1,200	1,200	1,200
Bolivia	1,481	595	1,000	1,000	1,025	1,025
Tanzania	1,043	1,077	1,000	1,000	1,000	1,000
Others	7,820	7,281	6,908	7,325	7,058	7,100
Subtotal	53,322	49,707	52,833	50,279	53,783	54,025
United States	9,474	11,375	4,770	8,071	9,475	7,082
World Total	62,796	61,082	57,603	58,350	63,258	61,107
Total Consumption						
China	11,400	14,300	7,900	10,500	10,600	9,300
Nigeria	6,550	6,650	6,750	6,400	7,100	7,100
Sudan	5,100	3,700	5,200	3,250	4,950	4,950
Brazil	2,100	2,800	4,700	4,800	4,900	4,900
Mexico	4,500	5,000	5,100	4,600	4,600	4,600
India	4,550	4,450	3,900	4,300	4,200	4,400
Ethiopia	5,200	4,650	4,250	4,050	4,100	4,100
Burkina Faso	1,900	1,650	1,950	1,800	1,900	1,900
Niger	2,050	1,400	2,000	1,800	1,850	1,850
Argentina	1,050	1,150	1,000	1,150	1,600	1,600
Mali	1,700	1,400	1,550	1,500	1,500	1,500
Cameroon	1,230	1,215	1,210	1,225	1,215	1,215
Bolivia	1,400	650	950	1,000	1,025	1,025
Tanzania	1,025	1,050	1,025	1,000	1,000	1,000
Chad	1,000	950	975	915	975	975
Others	7,639	7,458	6,837	7,600	6,887	6,922
Subtotal	59,895	57,680	55,391	56,587	59,584	58,549
United States	2,638	3,175	2,585	2,083	2,922	2,159
World Total	62,533	60,855	57,976	58,670	62,506	60,708
Ending Stocks						
Brazil	278	336	439	448	488	488
Argentina	187	221	181	231	431	431
China	269	332	387	382	377	377
Sudan	280	148	301	151	246	246
Australia	20	331	301	291	231	231
Mali	296	144	176	204	204	204
Niger	221	53	178	103	178	178
Others	1,913	1,441	1,255	1,068	1,144	1,152
Subtotal	3,464	3,006	3,218	2,878	3,299	3,307
United States	516	1,201	616	636	890	606
World Total	3,980	4,207	3,834	3,514	4,189	3,913

Regional Sorghum Imports, Production, Consumption, and Stocks

Thousand Metric Tons

	2020/21	2021/22	2022/23	2023/24	Jul 2024/25	Aug 2024/25
TY Imports						
North America	134	362	176	176	150	150
South America	37	31	40	50	33	33
European Union	13	167	38	15	20	20
Other Europe	23	19	13	16	20	20
Middle East	40	85	30	40	26	26
North Africa	0	1	2	3	1	1
Sub-Saharan Africa	656	518	584	618	593	593
East Asia	9,030	11,307	5,157	7,713	7,799	6,499
Southeast Asia	28	32	21	25	25	25
Others	7	8	6	5	1	1
Total	9,968	12,530	6,067	8,661	8,668	7,368
Production						
North America	13,822	16,215	9,662	12,351	13,975	11,582
Central America	249	215	195	195	195	195
Caribbean	76	71	66	61	61	61
South America	7,141	6,551	7,563	8,631	9,265	9,265
European Union	1,006	801	513	794	790	850
Middle East	616	664	469	468	498	498
North Africa	762	803	755	784	794	794
Sub-Saharan Africa	29,429	25,276	28,588	25,209	27,983	27,983
East Asia	2,972	3,379	3,098	3,002	3,002	3,002
South Asia	4,908	4,214	3,949	4,535	4,335	4,535
Southeast Asia	50	50	50	50	50	50
Oceania	1,639	2,648	2,638	2,200	2,200	2,200
Others	126	195	57	70	110	92
Total	62,796	61,082	57,603	58,350	63,258	61,107
Domestic Consumption						
North America	7,138	8,175	7,685	6,683	7,522	6,759
Central America	252	217	195	195	195	195
Caribbean	78	74	68	66	62	62
South America	4,822	4,799	6,787	7,142	7,735	7,735
European Union	1,033	948	542	800	800	855
Middle East	656	742	501	513	524	524
North Africa	764	789	766	785	785	785
Sub-Saharan Africa	29,572	26,419	28,823	26,013	28,251	28,251
East Asia	11,774	14,620	8,198	10,705	10,801	9,501
South Asia	4,651	4,518	4,040	4,435	4,335	4,535
Southeast Asia	83	77	76	74	74	74
Oceania	95	160	160	510	160	160
Others	114	110	41	52	80	60
Total	61,032	61,648	57,882	57,973	61,324	59,496
Ending Stocks						
North America	618	1,504	886	760	1,063	779
Central America	6	4	4	4	4	4
South America	638	677	790	854	1,092	1,092
European Union	20	18	16	13	13	18
Middle East	0	0	0	0	0	0
North Africa	6	20	10	12	21	22
Sub-Saharan Africa	1,762	991	1,269	952	1,192	1,192
East Asia	295	356	411	416	411	411
South Asia	598	258	135	205	155	155
Oceania	20	331	301	291	231	231
Others	17	48	12	7	7	9
Total	3,980	4,207	3,834	3,514	4,189	3,913

NOTES: Regional definitions appear on last page of this circular. Imports are reported on a trade year basis. All other data are reported using local marketing years.

World Oats Trade
October/September Year, Thousand Metric Tons

	2020/21	2021/22	2022/23	2023/24	2024/25 Jul	2024/25 Aug
TY Exports						
Canada	1,959	1,222	1,891	1,500	1,450	1,450
Australia	391	512	574	350	400	450
Russia	90	150	150	275	300	250
United Kingdom	31	167	147	100	125	125
European Union	145	202	90	120	85	85
Brazil	1	7	21	10	10	10
Ukraine	15	9	4	10	10	10
Others	15	62	33	27	14	14
Subtotal	2,647	2,331	2,910	2,392	2,394	2,394
United States	51	33	29	30	30	30
World Total	2,698	2,364	2,939	2,422	2,424	2,424
TY Imports						
China	301	342	463	450	450	450
Mexico	171	189	185	160	125	125
European Union	33	209	125	125	100	100
Chile	169	12	75	60	50	50
India	46	45	53	45	50	50
Japan	48	48	44	45	50	50
Switzerland	49	50	42	40	45	45
Peru	44	30	45	35	35	35
Malaysia	26	19	28	30	30	30
Korea, South	24	26	22	25	25	25
South Africa	21	0	39	25	25	25
Canada	19	28	21	15	20	20
Norway	15	32	13	55	20	20
United Kingdom	18	16	19	15	20	20
Uruguay	1	10	21	15	15	15
Others	59	26	52	43	32	32
Subtotal	1,044	1,082	1,247	1,183	1,092	1,092
Unaccounted	82	26	92	39	82	82
United States	1,572	1,256	1,600	1,200	1,250	1,250
World Total	2,698	2,364	2,939	2,422	2,424	2,424

TY=Trade Year, see Endnotes.

World Oats Production, Consumption, and Stocks
Local Marketing Years, Thousand Metric Tons

	2020/21	2021/22	2022/23	2023/24	2024/25 Jul	2024/25 Aug
Production						
European Union	8,473	7,502	7,509	5,931	7,100	7,400
Canada	4,576	2,899	5,226	2,636	3,400	3,400
Russia	4,127	3,733	4,500	3,300	3,800	3,250
Australia	1,898	1,735	1,587	1,100	1,200	1,200
Brazil	1,096	1,143	1,179	1,168	1,200	1,200
United Kingdom	1,031	1,123	1,007	830	1,000	1,000
Argentina	510	725	429	565	600	600
China	600	600	600	600	600	600
Chile	525	578	333	400	470	470
Ukraine	515	478	380	430	350	400
Turkey	315	276	365	325	340	340
Belarus	445	350	375	350	320	320
Norway	316	269	291	300	300	300
Kazakhstan	240	182	229	150	210	190
Algeria	69	40	105	105	105	105
Others	355	436	386	362	371	371
Subtotal	25,091	22,069	24,501	18,552	21,366	21,146
United States	954	578	837	828	898	981
World Total	26,045	22,647	25,338	19,380	22,264	22,127
Total Consumption						
European Union	8,250	7,475	7,415	6,235	7,025	7,350
Russia	4,050	3,650	4,300	3,050	3,500	3,000
Canada	2,340	1,920	2,565	2,050	1,950	1,950
Brazil	1,075	1,125	1,175	1,150	1,175	1,175
China	900	925	1,050	1,050	1,050	1,050
United Kingdom	969	1,007	870	795	880	880
Australia	1,200	1,200	1,100	900	750	750
Argentina	525	710	450	555	600	600
Chile	615	570	420	455	520	520
Ukraine	475	465	405	415	340	390
Turkey	315	280	370	325	350	350
Belarus	440	350	375	350	325	325
Norway	340	295	300	355	325	325
Mexico	235	265	295	230	200	200
Kazakhstan	235	205	205	160	200	180
Others	683	652	718	691	703	695
Subtotal	22,884	21,205	22,006	18,738	19,929	19,776
United States	2,362	2,015	2,219	2,056	2,121	2,193
World Total	25,246	23,220	24,225	20,794	22,050	21,969
Ending Stocks						
Canada	657	333	1,275	376	396	396
European Union	469	424	605	296	375	361
Australia	416	395	349	199	249	199
Russia	188	122	173	149	149	149
China	108	125	138	138	138	138
Brazil	88	96	80	88	103	103
United Kingdom	147	157	140	70	85	85
Others	415	341	315	323	305	314
Subtotal	2,488	1,993	3,075	1,639	1,800	1,745
United States	552	474	505	527	568	579
World Total	3,040	2,467	3,580	2,166	2,368	2,324

Regional Oats Imports, Production, Consumption, and Stocks

Thousand Metric Tons

	2020/21	2021/22	2022/23	2023/24	Jul 2024/25	Aug 2024/25
TY Imports						
North America	1,762	1,473	1,806	1,375	1,395	1,395
South America	241	53	166	120	110	110
European Union	33	209	125	125	100	100
Other Europe	89	104	80	117	88	88
Former Soviet Union - 12	7	7	11	9	4	4
Middle East	0	7	5	7	5	5
North Africa	18	5	5	10	10	10
Sub-Saharan Africa	21	0	39	25	25	25
East Asia	373	416	529	520	525	525
South Asia	46	45	53	45	50	50
Southeast Asia	26	19	28	30	30	30
Oceania	0	0	0	0	0	0
Total	2,616	2,338	2,847	2,383	2,342	2,342
Production						
North America	5,593	3,570	6,176	3,519	4,378	4,461
South America	2,192	2,507	2,008	2,179	2,326	2,326
European Union	8,473	7,502	7,509	5,931	7,100	7,400
Other Europe	1,484	1,525	1,432	1,264	1,435	1,435
Former Soviet Union - 12	5,334	4,801	5,490	4,283	4,718	4,198
Middle East	315	276	365	325	340	340
North Africa	75	46	109	111	111	111
Sub-Saharan Africa	57	59	28	41	30	30
East Asia	601	601	601	601	601	601
South Asia	0	0	0	0	0	0
Southeast Asia	0	0	0	0	0	0
Oceania	1,921	1,760	1,620	1,126	1,225	1,225
Total	26,045	22,647	25,338	19,380	22,264	22,127
Domestic Consumption						
North America	4,937	4,200	5,079	4,336	4,271	4,343
South America	2,353	2,513	2,204	2,261	2,410	2,410
European Union	8,250	7,475	7,415	6,235	7,025	7,350
Other Europe	1,506	1,491	1,356	1,328	1,392	1,384
Former Soviet Union - 12	5,211	4,732	5,294	4,031	4,405	3,935
Middle East	315	280	370	325	350	350
North Africa	101	59	114	121	121	121
Sub-Saharan Africa	69	70	69	65	60	60
East Asia	972	1,000	1,117	1,120	1,125	1,125
South Asia	46	45	53	44	50	50
Southeast Asia	26	19	28	30	30	30
Oceania	1,223	1,225	1,133	926	775	775
Total	25,009	23,109	24,232	20,822	22,014	21,933
Ending Stocks						
North America	1,222	823	1,794	917	983	994
South America	242	205	171	188	198	198
European Union	469	424	605	296	375	361
Other Europe	198	206	197	129	133	143
Former Soviet Union - 12	341	253	293	259	260	260
Middle East	6	9	8	13	9	8
North Africa	0	0	0	0	0	0
Sub-Saharan Africa	34	23	21	22	17	17
East Asia	109	126	139	140	141	141
South Asia	0	0	0	0	0	0
Southeast Asia	0	0	0	0	0	0
Oceania	419	398	352	202	252	202
Total	3,040	2,467	3,580	2,166	2,368	2,324

NOTES: Regional definitions appear on last page of this circular. Imports are reported on a trade year basis. All other data are reported using local marketing years.

World Rye Trade
October/September Year, Thousand Metric Tons

	2020/21	2021/22	2022/23	2023/24	2024/25 Jul	2024/25 Aug
TY Exports						
Canada	148	157	222	180	180	180
European Union	95	210	138	225	175	175
Russia	101	125	65	185	100	25
Ukraine	58	124	14	3	10	10
Belarus	22	5	5	5	5	5
Others	3	22	30	9	6	6
Subtotal	427	643	474	607	476	401
United States	4	3	5	6	5	5
World Total	431	646	479	613	481	406
TY Imports						
European Union	131	219	131	200	130	50
Japan	22	13	11	10	10	10
Israel	18	5	0	10	5	5
Kazakhstan	11	1	10	8	5	5
Norway	10	3	2	6	5	5
United Kingdom	4	11	4	5	5	5
Korea, South	4	4	4	4	4	4
Others	10	47	10	10	6	7
Subtotal	210	303	172	253	170	91
Unaccounted	31	12	32	35	36	40
United States	190	331	275	325	275	275
World Total	431	646	479	613	481	406

TY=Trade Year, see Endnotes.

World Rye Production, Consumption, and Stocks
Local Marketing Years, Thousand Metric Tons

	2020/21	2021/22	2022/23	2023/24	2024/25 Jul	2024/25 Aug
Production						
European Union	8,968	7,996	7,545	7,633	7,700	7,600
Russia	2,376	1,716	2,000	1,700	1,850	1,350
Belarus	1,051	800	750	780	760	760
Canada	488	372	520	358	345	345
Turkey	296	200	273	320	320	320
Ukraine	459	600	315	240	230	200
Argentina	135	225	179	165	185	185
Others	200	202	248	192	198	186
Subtotal	13,973	12,111	11,830	11,388	11,588	10,946
United States	294	249	316	264	337	337
World Total	14,267	12,360	12,146	11,652	11,925	11,283
Total Consumption						
European Union	8,750	7,950	7,565	7,760	7,750	7,675
Russia	2,200	1,700	1,850	1,600	1,750	1,350
Belarus	1,050	790	740	750	775	775
Turkey	296	228	283	334	320	320
Ukraine	402	365	277	277	242	277
Argentina	135	225	179	165	185	185
Canada	289	231	305	195	175	175
Norway	43	45	63	56	55	55
Australia	32	32	32	32	32	32
United Kingdom	36	28	5	35	24	24
Others	150	141	135	114	116	105
Subtotal	13,404	11,737	11,456	11,361	11,517	11,040
United States	529	522	607	627	609	609
World Total	13,933	12,259	12,063	11,988	12,126	11,649
Ending Stocks						
European Union	743	888	836	659	486	429
Russia	201	93	179	94	94	69
Canada	91	84	105	71	62	62
Ukraine	90	164	184	144	45	57
Belarus	31	34	37	65	48	48
Japan	1	1	1	1	1	1
Kazakhstan	4	4	4	1	1	1
Others	14	24	14	0	0	0
Subtotal	1,175	1,292	1,360	1,035	737	667
United States	32	16	31	20	22	22
World Total	1,207	1,308	1,391	1,055	759	689

Regional Rye Imports, Production, Consumption, and Stocks

Thousand Metric Tons

	2020/21	2021/22	2022/23	2023/24	Jul 2024/25	Aug 2024/25
TY Imports						
North America	191	332	277	328	276	276
South America	0	0	0	0	0	0
European Union	131	219	131	200	130	50
Other Europe	17	20	10	15	12	13
Former Soviet Union - 12	17	5	14	11	8	8
Middle East	18	41	0	10	5	5
Sub-Saharan Africa	0	0	0	0	0	0
East Asia	26	17	15	14	14	14
Oceania	0	0	0	0	0	0
Total	400	634	447	578	445	366
Production						
North America	782	621	836	622	682	682
South America	152	244	194	173	197	197
European Union	8,968	7,996	7,545	7,633	7,700	7,600
Other Europe	118	108	138	131	116	116
Former Soviet Union - 12	3,916	3,156	3,125	2,738	2,875	2,333
Middle East	296	200	273	320	320	320
Sub-Saharan Africa	3	3	3	3	3	3
East Asia	0	0	0	0	0	0
Oceania	32	32	32	32	32	32
Total	14,267	12,360	12,146	11,652	11,925	11,283
Domestic Consumption						
North America	818	753	912	822	784	784
South America	152	244	194	173	197	197
European Union	8,750	7,950	7,565	7,760	7,750	7,675
Other Europe	130	125	120	147	126	127
Former Soviet Union - 12	3,687	2,900	2,917	2,650	2,802	2,425
Middle East	314	233	283	344	325	325
Sub-Saharan Africa	3	3	3	3	3	3
East Asia	26	17	15	14	14	14
Oceania	32	32	32	32	32	32
Total	13,912	12,257	12,041	11,945	12,033	11,582
Ending Stocks						
North America	123	100	136	91	84	84
South America	0	0	0	0	0	0
European Union	743	888	836	659	486	429
Other Europe	0	0	0	0	0	0
Former Soviet Union - 12	326	295	404	304	188	175
Middle East	14	24	14	0	0	0
Sub-Saharan Africa	0	0	0	0	0	0
East Asia	1	1	1	1	1	1
Oceania	0	0	0	0	0	0
Total	1,207	1,308	1,391	1,055	759	689

NOTES: Regional definitions appear on last page of this circular. Imports are reported on a trade year basis. All other data are reported using local marketing years.