



GIEWS Country Brief Democratic People's Republic of Korea

Reference Date: 12-August-2024

FOOD SECURITY SNAPSHOT

- **Main 2024 food crops affected by severe floods following torrential rains in July 2024**
- **Minor 2023/24 winter and spring cereal crops benefited from favourable weather conditions**

Main 2024 food crops affected by severe floods following torrential rains in July 2024

Planting of the 2024 main food crops, which account for about 90 percent of the total annual production and consist mostly of rice and maize plus small quantities of soybeans, potatoes, millet and sorghum, finalized in June. Harvesting is expected to begin from late August 2024. Seasonal rains started on time in mid-April. In May and June, precipitation amounts were average to above average and well distributed, supporting crop establishment and early development. These generally conducive conditions were followed by torrential rains in July that caused waterlogging and triggered flooding, affecting standing crops. In key producing provinces of South and North Hwanghae, and South and North Pyongan, collectively known as the country's "Cereal Bowl", cumulative precipitation amounts in July were up to 80 percent above the average (Precipitation Anomaly map). Although a detailed assessment of the damage to crops is not yet available, it is likely that paddy crops in low-lying areas have been particularly affected. In areas not affected by the floods, abundant rains are expected to have benefited crops.

The latest weather forecasts point to a continuation of above-average precipitation amounts between August and October 2024. Heavy rains could exacerbate waterlogging and lead to further flooding, causing significant agricultural damage and population displacements. In addition, above-average temperatures are forecast during the same period, raising the risk of increased incidences of pest and disease infestations, and potentially reduced yields.

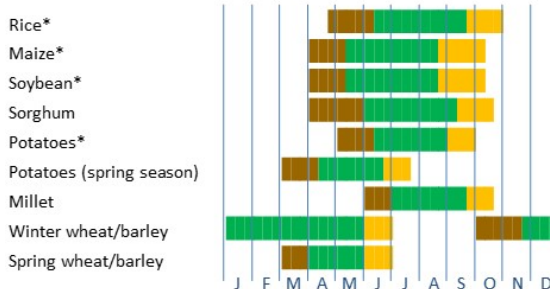
Minor 2023/24 winter and spring cereal crops benefited from favourable weather conditions

Harvesting of the 2023/24 minor winter and spring cereal crops, mainly wheat and barley, was completed in June 2024 and weather conditions during the cropping season were generally favourable. In late May, just before the beginning of the harvest, vegetation conditions were mostly above average (Vegetation Condition Index map) over most of the country, inferring to generally favourable yields.

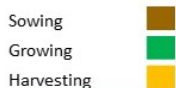
Democratic People's Republic of Korea

Crop Calendar

(*major foodcrop)

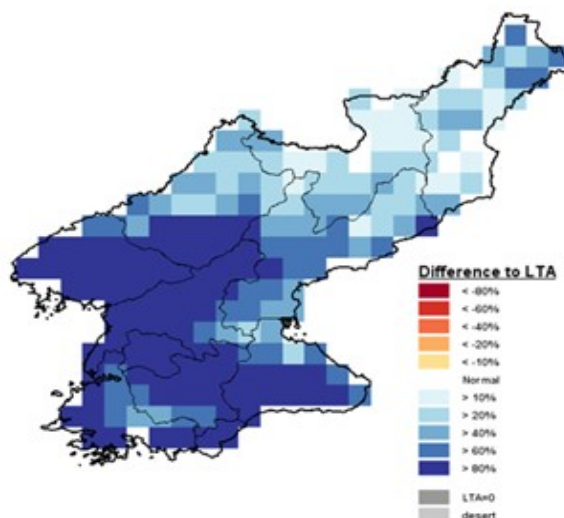


Lean period



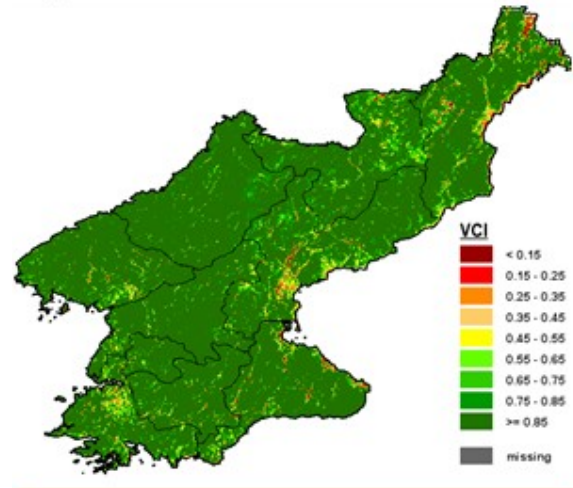
Democratic People's Republic of Korea - Precipitation anomaly

Relative difference to Long Term Average - July 2024



Democratic People's Republic of Korea -
Vegetation Condition Index (VCI)

May 2024



Disclaimer: The designations employed and the presentation of material in this information product do not imply the expression of any opinion whatsoever on the part of FAO concerning the legal status of any country, territory, city or area or of its authorities, or concerning the delimitation of its frontiers or boundaries.

This brief was prepared using the following data/tools:

FAO/GIEWS Country Cereal Balance Sheet (CCBS) <https://www.fao.org/giews/data-tools/en/>.

FAO/GIEWS Food Price Monitoring and Analysis (FPMA) Tool <https://fpma.fao.org/>.

FAO/GIEWS Earth Observation for Crop Monitoring <https://www.fao.org/giews/earthobservation/>.

Integrated Food Security Phase Classification (IPC) <https://www.ipcinfo.org/>.